



Ferrite Cores Catalogue

FERRITE CORES

**SAME DAY
DISPATCH
AVAILABLE ON
STANDARD
PARTS**

SOURCING, SIMPLIFIED

Get the components you need, when you need them. We are aiming to be the world's leading, responsible, hassle free supplier of essential industrial components, leveraging 65+ years of expertise to serve over 70% of the world's top manufacturers. With a global reach and local support, we offer the parts you need, when you need them, all backed by exceptional service.

24
Distribution
Centres

33
Sales and Service
Locations

MANUFACTURING SITES:



14

Manufacturing Facilities

>2

BILLION Parts in stock

60

MILLION Parts produced each week

4

R&D Centres



65+ YEARS

solving customer challenges



Operations in 28 COUNTRIES worldwide



Over 45,000 products available



SAME DAY DISPATCH

Moss
FORMATION OF MOSS PLASTIC PARTS

1955

1987 ACQUISITION OF ALLIANCE

2001 ACQUISITION OF PLASTIV/S

2007 ACQUISITION OF DURACO

2011 ACQUISITION OF RICHCO

2011 ACQUISITION OF REID

2011 ACQUISITION OF SKIFFY

2013 ACQUISITION OF MESAN

2013 REBRAND TO ESSENTRA

2013 ACQUISITION OF COVERTECH

2014 ACQUISITION OF ABRIC

2014 ACQUISITION OF KELVINDALE

2014 ACQUISITION OF ABRIC

2017 ACQUISITION OF MICRO PLASTICS

2015 ACQUISITION OF SPECIALITY PLASTICS

2019 ACQUISITION OF INNOVATIVE COMPONENTS

2018 ACQUISITION OF HERTILA

2022 ACQUISITION OF WIXROYD

2021 ACQUISITION OF HENGZHU

2023 ACQUISITION OF BMP TAPPI

BMP TAPPI

Wixroyd

INNOVATIVE COMPONENTS, INC.

micro plastics, Inc.

Kelvindale Products Pty Ltd.

ESSENTRA COMPONENTS

mesan

Richco

DURACO

Skiffy

plastiv/s

DURACO

Richco

mesan

ESSENTRA COMPONENTS

Kelvindale Products Pty Ltd.

2017 ACQUISITION OF MICRO PLASTICS

2019 ACQUISITION OF INNOVATIVE COMPONENTS

2022 ACQUISITION OF WIXROYD

2023 ACQUISITION OF BMP TAPPI

BMP TAPPI

HENGZHU

Hertila

sp specialityplastics

ABRIC

COVER TECH

Reid



031 10 50 00



sales@essentracomponents.se



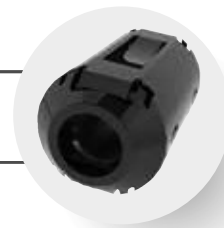
THOUSANDS OF FERRITE CORES **IN STOCK**

Protect your electrical components and prevent interference. Whether you're in the MATV & CATV industries, or need EMI suppression on ribbon cable applications we've got thousands of ferrite cores in stock today!

essentracomponents.se

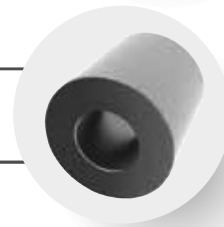
EMI SUPPRESSION FERRITE CORES

ROUND CABLE CORES - SPLIT



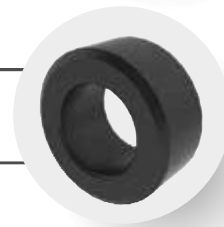
007

ROUND CABLE CORES - SLEEVE



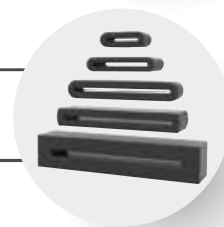
013

TOROID CORES



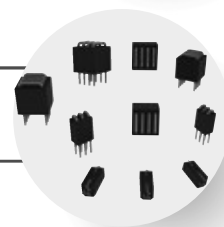
023

FLAT CABLE CORES



033

INLINE BEADS



041

EMI SUPPRESSION FERRITE CORES

General Features

Split Ferrite Cores

These products are used as suppression cores for round cable and are available for a wide range of cable diameters. The A5 material cores are installed around a cable and attenuate any form of EMI emission. The nylon case simplifies assembly of the core in equipment where retrofit and testing is a necessity. The split ferrite cores with plastic casing allows protection against unwanted EMI radiation in digital equipment such as personal computers, word processors, fax machines, display equipment, photocopiers and computer consoles. This protection ensures immunity against transmission and other types of noise in such equipment which is essential.

Solid Ferrite Cores

Bead cores are a broad selection of shielding beads that guarantee impedance specifications over a wide frequency range. The RRH series of bead cores mainly have applications on wire assemblies and the MATV CATV industries. The ring configuration of the RT series provides greater utilisation of the ferrite material properties. The RT type ferrite cores can be used for a wide frequency range and is mainly used as a multi-turn suppression core.

Flat Cable Suppression Cores

The family of Flat cable suppression cores are used to attenuate irradiated or conducted EMI noise on ribbon cables.

Bead Cores & Multiline Beads

Ferrite bead cores are available in axial configuration. The bead cores Taped ferrite bead cores are available for "pick and place".

Ferrite Standard Characteristics Materials

Property	Initial Permeability	Curie Temperature	Specific Gravity	Loss Factor @FREQUENCY	Temp. Coef. of Initial Permeability 20-70 °C
Unit	-	°C	g/cm ³	10-6MHz	10-6°C
Symbol	μ_i	T _c	d	$1/\mu_i Q$	$\alpha \mu_i r$
A6	1800±25%	>100	4.7	75 (0.5)	0-3
A5	1000±25%	>130	4.8	280 (1.0)	2-5
K5B	700±25%	>140	4.8	250 (1.0)	0-7

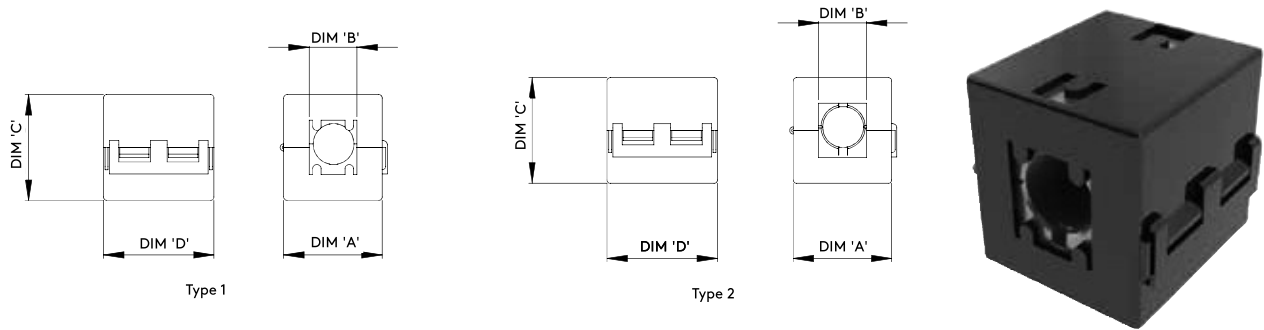
- Permeability: The permeability of a magnetic core material is the core material's ability to concentrate lines of magnetic flux.
- Curie Temperature: The temperature above which a ferrite core loses its magnetic properties.

Round Cable Suppression Cores with plastic casing

RKCF

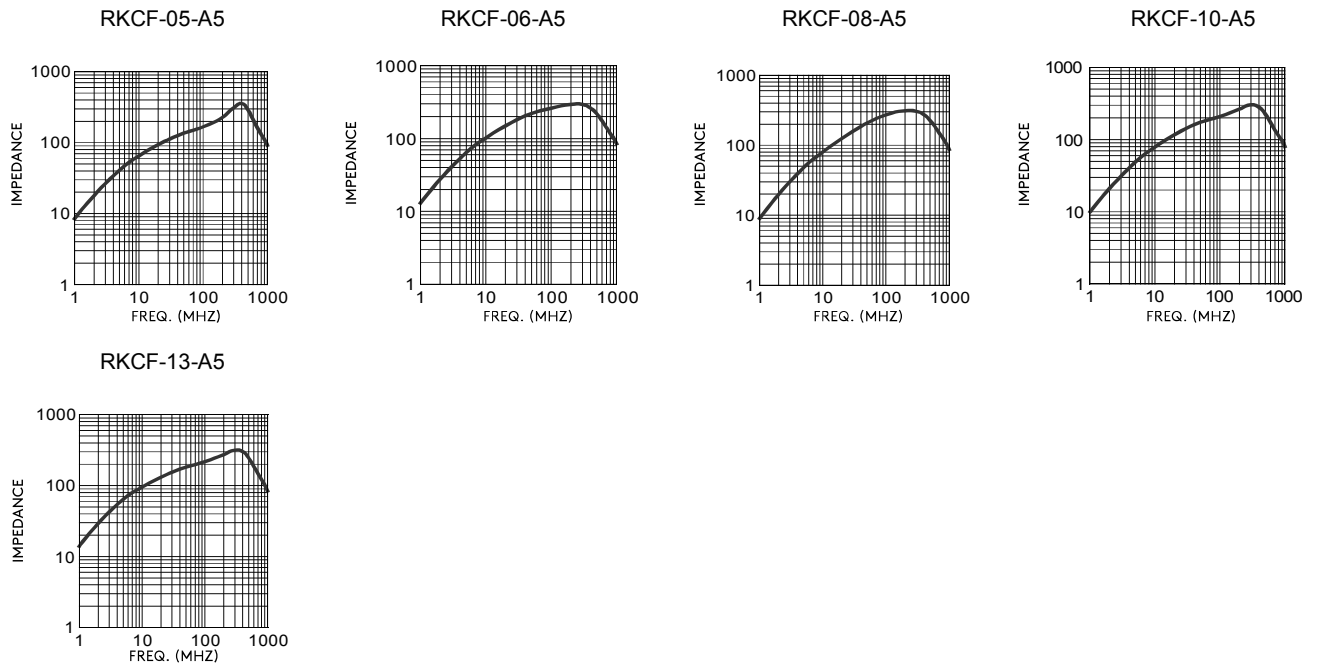
Ferrite Material: A5 RMS-303

Casing Material: Black Nylon 6/6 RMS-244



Part Number	Applicable Cable Max.	Type	Dimensions (mm)				Impedance (Ω)		Std Pack Qty
			A	B	C	D	25MHz	100MHz	
RKCF-05-A5	5	1	15	6	14	23	105	170	104
RKCF-06-A5	6.5	1	20.5	7.5	20	33	180	275	56
RKCF-08-A5	8	2	20.5	7.5	20	33	130	260	56
RKCF-10-A5	10	1	25.5	11.5	23.5	32.5	130	240	48
RKCF-13-A5	13	1	31.5	14	31	32.5	150	250	32

Standard Pack sizes may vary



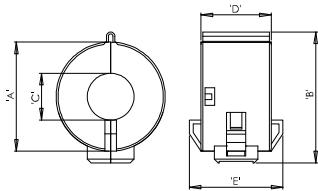
ROUND CABLE CORES – SPLIT

Round Cable Suppression Cores with plastic casing

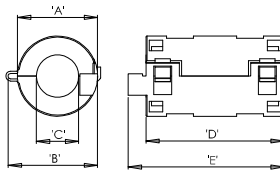
RRC

Ferrite Material: K5B RMS-303

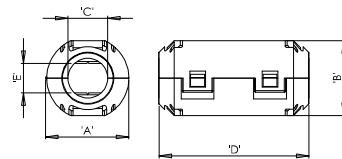
Casing Material: Black Nylon 6/6 RMS-244



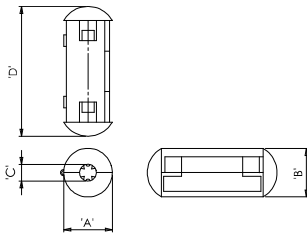
Type 1



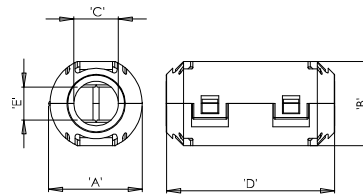
Type 2



Type 3



Type 4



Type 5

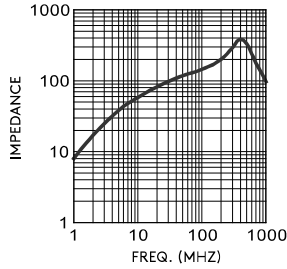
Part Number	Applicable Cable Max.	Type	Dimensions (mm)					Impedance (Ω)		Std Pack Qty
			A	B	C	D	E	25MHz	100MHz	
RRC-10-5-20-M	3,5	3	13.00	12.00	5.00	25.50	2.40	93	158	60
RRC-12-7-15-M	7	2	14.00	15.50	7.00	18.00	22.00	47	101	150
RRC-13-7-23-M	4	3	17.00	15.00	7.00	30.00	3.00	115	180	36
RRC-14-7-28-M	7	4	20.00	20.00	8.50	39.00	-	150	260	50
RRC-16-8-13-M	8	1	19.50	23.00	8.00	17.00	23.00	60	120	80
RRC-16-8-16-M	8	1	19.20	23.40	8.20	20.00	26.10	75	160	40
RRC-16-8-28-M	8	2	19.50	20.00	9.50	31.00	35.00	130	200	32
RRC-16-9-28-M1	9	2	19.50	20.00	9.50	31.00	35.00	120	190	50
RRC-16-9-28-M2	9	3	20.00	18.00	9.50	36.00	6.50	120	190	50
RRC-17-11-28-M	11	2	20.50	20.50	11.00	31.50	36.00	97	207	50
RRC-20-10-10-M	10	1	24.50	28.50	10.20	13.50	20.00	50	105	44
RRC-20-13-30-M	12	3	23.00	22.00	13.50	36.00	10.00	90	140	80
RRC-20-5-30-M	4 x 1.5	5	23.00	22.00	5.00	36.00	10.00	270	560	80
RRC-24-11-14-M	11.5	1	28.00	31.50	11.50	18.00	24.00	70	140	40
RRC-25-15-12-M	15	1	29.00	33.00	15.00	15.00	21.50	45	100	36
RRC-26-13-30-M	13	2	30.75	31.00	13.00	34.00	39.00	140	225	20

Standard Pack sizes may vary

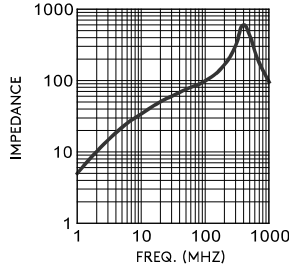


ROUND CABLE CORES – SPLIT

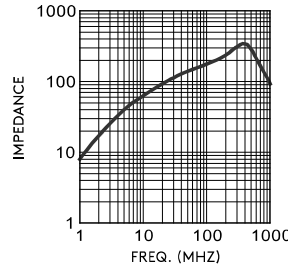
RRC-10-5-20-M



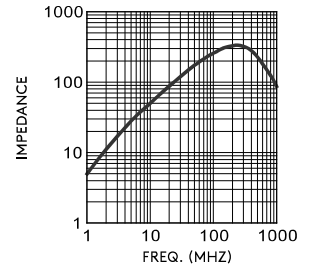
RRC-12-7-15-M



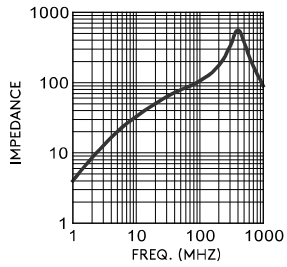
RRC-13-7-23-M



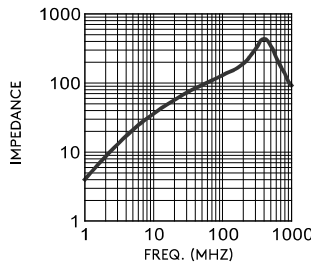
RRC-14-7-28-M



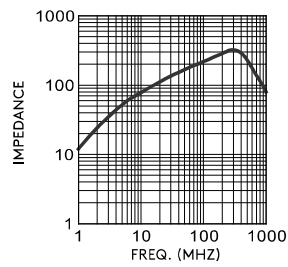
RRC-16-8-13-M



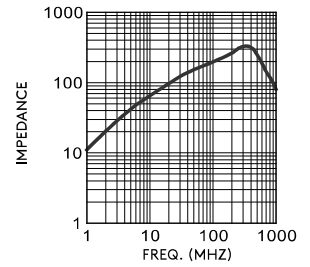
RRC-16-8-16-M



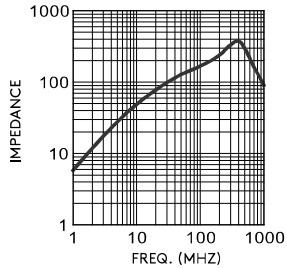
RRC-16-8-28-M



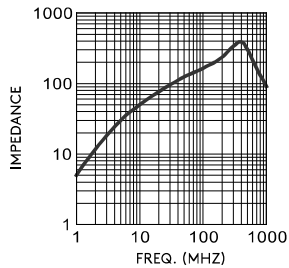
RRC-16-9-28-M1



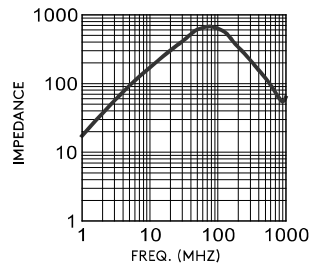
RRC-16-9-28-M2



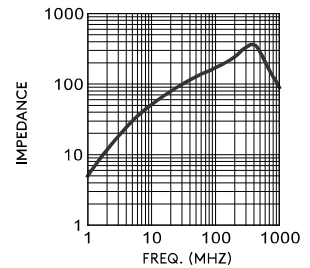
RRC-17-11-28-M



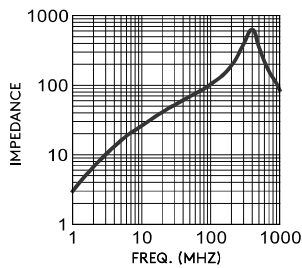
RRC-20-5-30-M



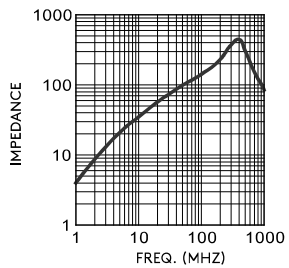
RRC-20-13-30-M



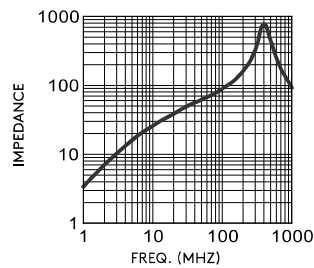
RRC-20-10-10-M



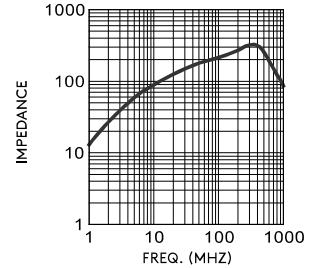
RRC-24-11-14-M



RRC-25-15-12-M



RRC-26-13-30-M



ROUND CABLE CORES – SPLIT

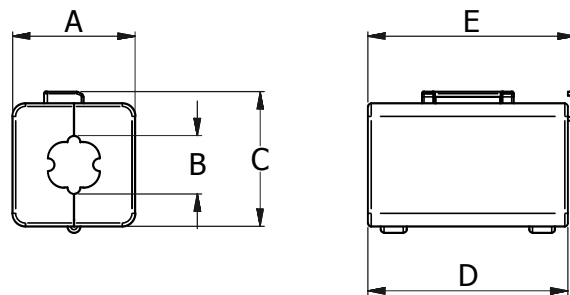
Round Cable Suppression Cores with Open/Close plastic casing

MSFC

Ferrite Material: G7 & 3A5

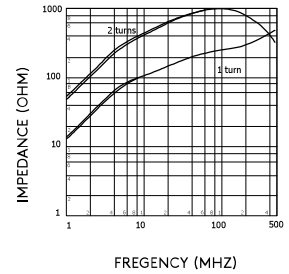
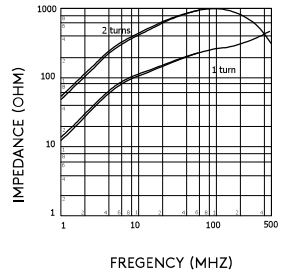
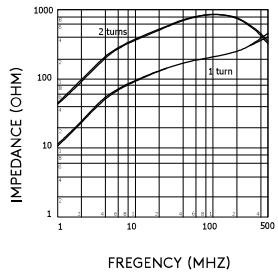
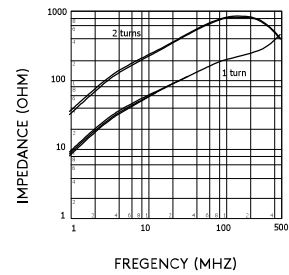
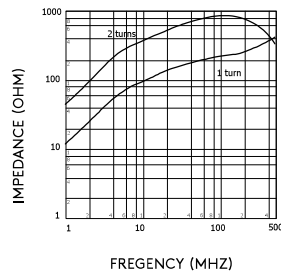
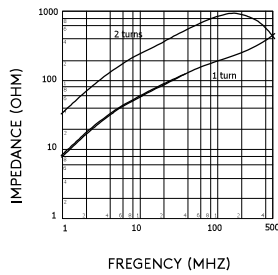
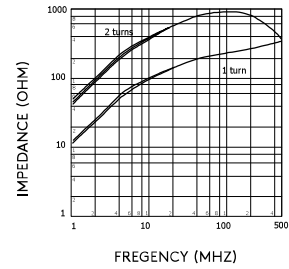
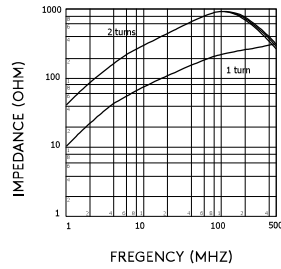
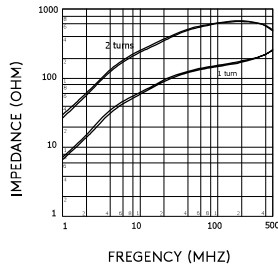
Casing Material: Nylon 66, UL94 V0

- Clamp type sleeve with lock on the outside of the case for easy open and close functionality
- Ideal for making estimations in EMI precaution
- Can be mounted on to both a cable with a connector and a wired harness
- The binding band ensures the cable is securely fixed
- The high performance magnetic material provides an effective noise filter which reduces unnecessary radiation without affecting the wave forms
- Perfect for preventing unwanted radiation and noise for digital equipment such as personal computers, office equipment, gaming machines and other electrical appliances



Part Number		Dimensions (mm)					Impedance (Ω) 1 Turn		Impedance (Ω) 2 Turns		Adaptation Cable	Std Pack
3A5	G7	A	B	C	D	E	25MHz	100MHz	25MHz	100MHz	Dia. \varnothing (mm)	Qty
MSFC-4EX	-	13.2	5.0	14.3	22.8	24.8	102	156	415	645	4.0~5.0	100
-	MSFC-5EA	16.6	6.0	18.0	31.0	33.0	170	257	692	1040	5.0~6.0	50
MSFC-5EX	-						133	244	542	1038		
-	MSFC-6KEA	19.0	7.0	20.8	31.0	33.0	141	214	570	857	6.0~7.0	50
MSFC-6-KEX	-						96	192	391	802		
-	MSFC-8KEA						139	219	563	875		
MSFC-8KEX	-	28.0	10.5	29.8	31.0	33.0	95	195	388	800	7.8~8.5	50
MSFC-10-KEX	-						166	250	690	990	9.5~10.5	30
MSFC-13-KEX	-						166	252	682	961	12.5~13.0	30

ROUND CABLE CORES – SPLIT



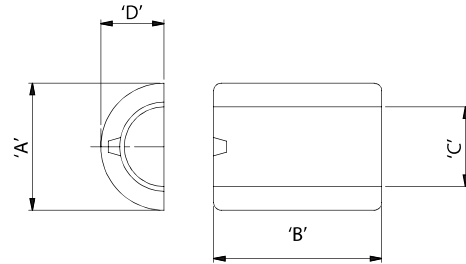
ROUND CABLE CORES – SPLIT

Round Cable Suppression Cores Split

RRC

Ferrite Material: K5B RMS-303

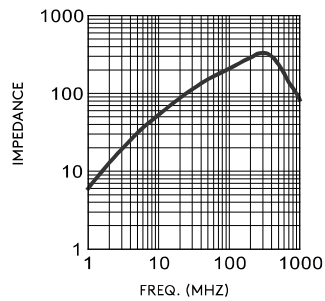
- Pack quantity = two half cores



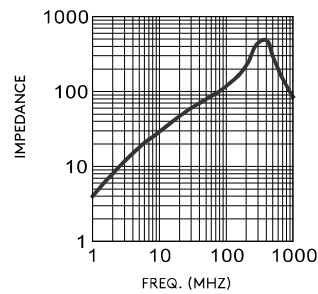
Part Number	Applicable Cable Max.	Dimensions (mm)				Impedance (Ω)		Std Pack Qty
		A	B	C	D	25MHz	100MHz	
RRC-17-9-28	9	17.50	28.50	9.50	8.75	98	160	80
RRC-35-23-15	22	35.50	15.00	22.50	17.40	51	108	24

Standard Pack sizes may vary

RRC-17-9-28



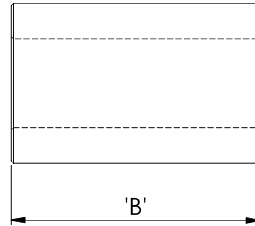
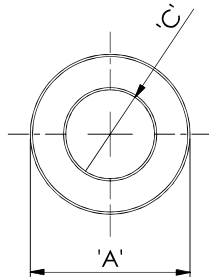
RRC-35-23-15



Sleeve Cores

RRH

Ferrite Material: K5B RMS-303



Part Number	Dimensions (mm)			Impedance (Ω)		Std Pack Qty
	A	B	C	25MHz	100MHz	
RRH-25-8-40	2.5	4	0.8	33	52	4000
RRH-25-8-70	2.5	7	0.8	55	85	4000
RRH-30-10-30	3	3	1	25	47	4000
RRH-30-10-40	3	4	1	32	51	4000
RRH-30-10-60	3	6	1	46	74	4000
RRH-30-12-30	3	3	1.2	23	44	4000
RRH-35-8-35	3.5	3.5	0.8	37	62	4000
RRH-35-8-45	3.5	4.5	0.8	46	86	4000
RRH-35-8-47	3.5	4.7	0.8	46	77	4000
RRH-35-8-50	3.5	5	0.8	50	85	4000
RRH-35-8-60	3.5	6	0.8	57	92	2000
RRH-35-8-75	3.5	7.5	0.8	69	114	2000
RRH-35-8-80	3.5	8	0.8	77	134	4000
RRH-35-8-90	3.5	9	0.8	93	158	1000
RRH-35-8-95	3.5	9.5	0.8	84	133	1000
RRH-35-8-140	3.5	14	0.8	144	212	2000
RRH-35-10-40	3.5	4	1	32	55	4000
RRH-35-10-60	3.5	6	1	53	75	2000
RRH-35-10-80	3.5	8	1	78	111	2000
RRH-35-12-35	3.5	3.5	1.2	26	45	4000
RRH-35-12-40	3.5	4	1.2	31	46	4000
RRH-35-12-50	3.5	5	1.2	37	55	4000
RRH-35-12-60	3.5	6	1.2	45	73	4000
RRH-35-12-70	3.5	7	1.2	54	84	2000
RRH-35-13-40	3.5	4	1.3	29	48	4000
RRH-35-13-50	3.5	5	1.3	37	61	4000
RRH-35-13-60	3.5	6	1.3	43	64	4000
RRH-35-13-90	3.5	9	1.3	62	80	2000
RRH-35-15-40	3.5	4	1.5	25	43	4000
RRH-35-15-50	3.5	5	1.5	33	51	4000
RRH-35-15-60	3.5	6	1.5	35	60	4000
RRH-35-18-35	3.5	3.5	1.8	19	37	4000
RRH-35-18-50	3.5	5	1.8	27	48	4000
RRH-35-18-60	3.5	6	1.8	28	54	4000
RRH-40-15-40	4	4	1.5	26	51	2000
RRH-40-15-50	4	5	1.5	35	54	2000
RRH-40-15-100	4	10	1.5	65	91	2000
RRH-40-20-40	4	4	2	24	48	4000
RRH-40-20-50	4	5	2	28	51	2000
RRH-40-20-60	4	6	2	30	49	2000
RRH-40-20-70	4	7	2	40	64	2000
RRH-40-20-80	4	8	2	39	58	2000
RRH-40-20-100	4	10	2	53	80	2000
RRH-40-20-120	4	12	2	52	76	2000
RRH-40-20-150	4	15	2	70	97	2000

Standard Pack sizes may vary



031 10 50 00



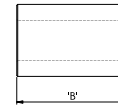
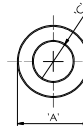
sales@essentracomponents.se

ROUND CABLE CORES – SLEEVE

Sleeve Cores CONTINUED

RRH

Ferrite Material: K5B RMS-303



Part Number	Dimensions (mm)			Impedance (Ω)		Std Pack Qty
	A	B	C	25MHz	100MHz	
RRH-40-20-170	4	17	2	79	116	2000
RRH-45-25-48	4.5	4.8	2.5	21	41	2000
RRH-45-25-70	4.5	7	2.5	32	55	2000
RRH-45-26-120	4.5	12	2.6	49	72	2000
RRH-46-20-110	4.6	11	2	65	104	2000
RRH-48-23-64	4.83	6.35	2.29	43	80	2000
RRH-50-15-110	5	11	1.5	84	119	1000
RRH-50-15-200	5	20	1.5	158	221	500
RRH-50-16-62	5	6.2	1.6	56	91	2000
RRH-50-22-120	5	12	2.15	69	108	1000
RRH-50-22-180	5	18	2.15	128	147	500
RRH-50-23-50	5	5	2.3	30	55	2000
RRH-50-23-100	5	10	2.3	51	72	1000
RRH-50-24-64	5	6.35	2.36	32	50	2000
RRH-57-15-80	5.7	8	1.5	76	111	1000
RRH-60-30-100	6	10	3	52	90	1000
RRH-60-30-250	6	25	3	120	175	500
RRH-60-32-180	6	18	3.15	100	155	500
RRH-60-40-100	6	10	4	27	48	1000
RRH-60-40-128	6	12.8	4	34	54	500
RRH-64-33-127	6.35	12.7	3.3	55	80	500
RRH-64-33-158	6.35	15.8	3.3	76	101	500
RRH-65-43-100	6.5	10	4.3	34	62	1000
RRH-65-43-110	6.5	11	4.3	38	63	1000
RRH-75-24-75	7.5	7.5	2.4	60	102	2000
RRH-79-30-100	7.9	10	3	68	108	1000
RRH-79-30-190	7.9	19	3	130	190	500
RRH-79-40-128	7.9	12.8	4	66	107	500
RRH-80-32-101	8	10.06	3.18	67	115	500
RRH-80-40-100	8	10	4	48	71	500
RRH-80-50-160	8	16	5	59	104	500
RRH-80-60-90	8	9	6	23	47	500
RRH-80-60-98	8	9.8	6	22	41	500
RRH-80-60-120	8	12	6	25	45	500
RRH-93-45-95	9.3	9.5	4.5	53	98	500
RRH-93-58-110	9.3	11	5.8	37	62	500
RRH-95-48-95	9.5	9.5	4.8	50	86	500
RRH-95-48-127	9.5	12.7	4.8	56	80	500
RRH-95-50-104	9.5	10.4	5	53	81	500
RRH-95-50-145	9.5	14.5	5	75	121	500
RRH-95-50-160	9.5	16	5	72	114	300
RRH-95-50-190	9.5	19	5	95	135	300
RRH-95-50-195	9.5	19.5	5	98	153	300
RRH-95-52-95	9.5	9.5	5.2	45	76	500
RRH-95-52-100	9.5	10	5.2	48	74	500
RRH-95-58-100	9.5	10	5.8	38	68	500
RRH-96-51-159	9.52	15.88	5.08	74	103	500
RRH-98-8-114	9.8	11.4	0.8	167	256	200
RRH-98-67-135	9.8	13.5	6.7	43	91	500
RRH-98-67-191	9.8	19.05	6.7	51	88	300
RRH-100-50-100	10	10	5	54	85	500
RRH-100-60-100	10	10	6	38	66	500
RRH-100-60-140	10	14	6	45	73	200
RRH-100-70-100	10	10	7	31	57	500
RRH-105-55-200	10.5	20	5.5	95	138	200
RRH-105-55-250	10.5	25	5.5	106	173	150
RRH-110-50-160	11	16	5	87	138	200
RRH-110-50-185	11	18.5	5	113	178	200
RRH-110-50-200	11	20	5	106	154	200
RRH-110-50-250	11	25	5	145	230	400
RRH-115-43-200	11.5	20	4.3	148	210	100
RRH-115-43-260	11.5	26	4.3	190	270	100
RRH-115-50-185	11.5	18.5	5	101	146	100
RRH-118-73-150	11.8	15	7.3	61	109	200
RRH-120-35-230	12	23	3.5	210	328	100
RRH-120-56-150	12	15	5.6	79	124	200
RRH-120-56-200	12	20	5.6	119	175	165
RRH-120-56-300	12	30	5.6	180	260	110

Standard Pack sizes may vary



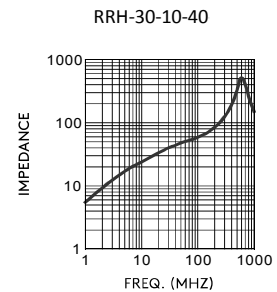
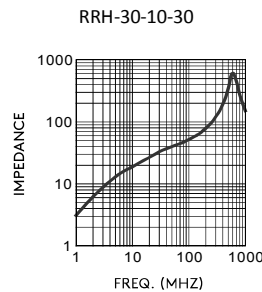
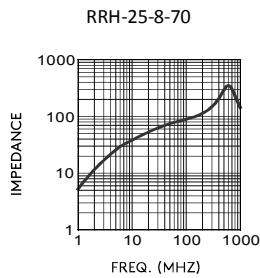
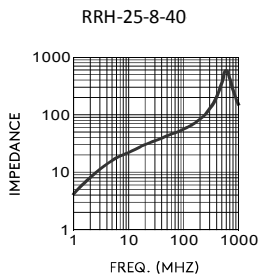
Sleeve Cores CONTINUED

RRH

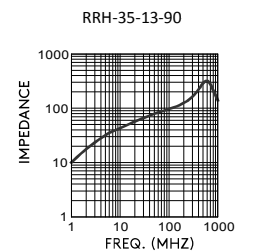
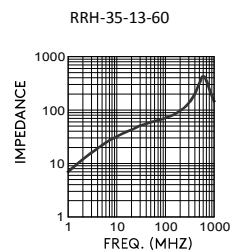
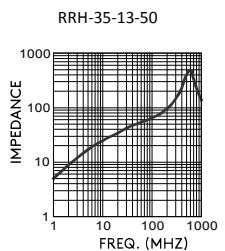
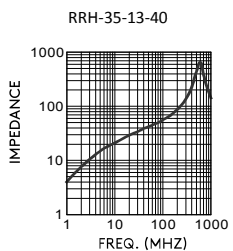
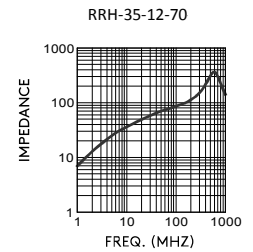
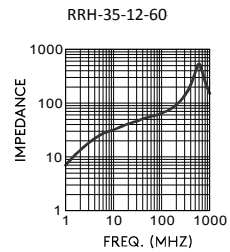
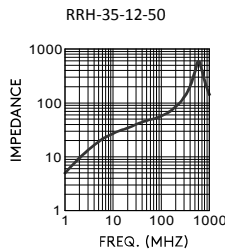
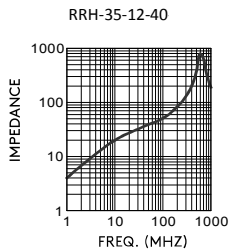
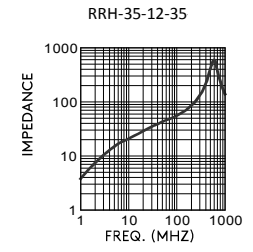
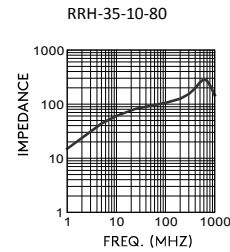
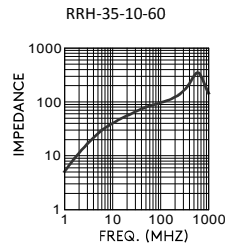
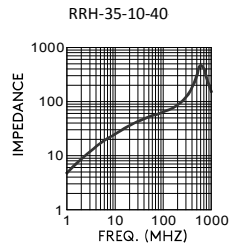
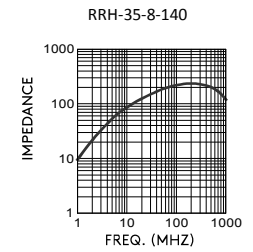
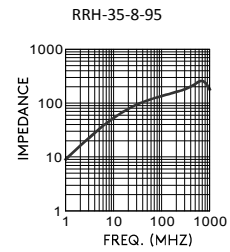
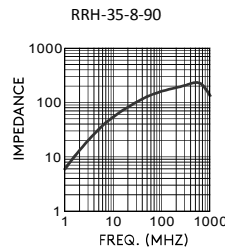
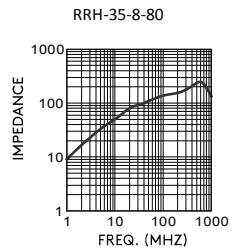
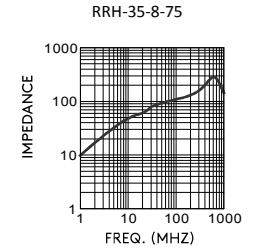
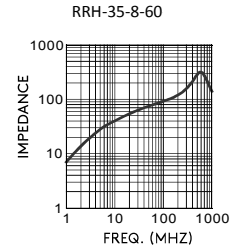
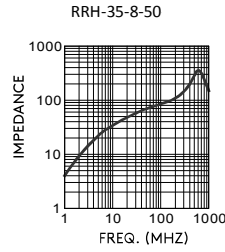
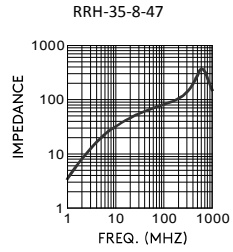
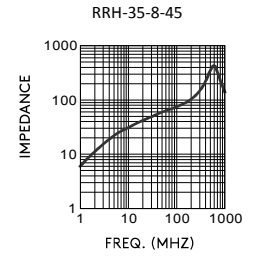
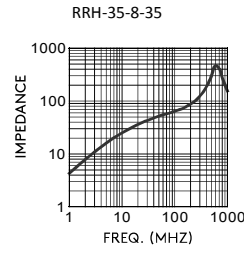
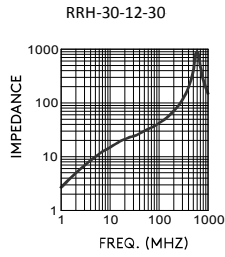
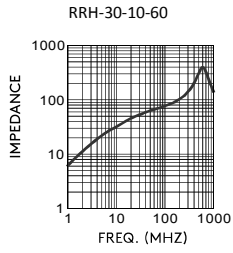
Ferrite Material: K5B RMS-303

Part Number	Dimensions (mm)			Impedance (Ω)		Std Pack Qty
	A	B	C	25MHz	100MHz	
RRH-120-70-120	12	12	7	46	76	300
RRH-120-70-150	12	15	7	60	92	200
RRH-120-73-200	12	20	7.3	69	108	100
RRH-120-85-120	12	12	8.5	39	75	200
RRH-120-85-150	12	15	8.5	45	85	200
RRH-122-79-230	12.2	23	7.9	67	108	100
RRH-123-70-200	12.3	20	7	72	137	165
RRH-123-49-254	12.32	25.4	4.88	172	264	100
RRH-125-52-150	12.5	15	5.2	95	145	200
RRH-125-80-125	12.5	12.5	8	42	72	200
RRH-127-79-127	12.7	12.7	7.9	43	60	200
RRH-140-90-150	14	15	9	48	82	200
RRH-142-64-150	14.2	15	6.35	92	146	200
RRH-142-64-180	14.2	18	6.35	99	141	100
RRH-142-64-285	14.2	28.5	6.35	164	255	110
RRH-142-70-150	14.2	15	7	78	116	200
RRH-142-70-235	14.2	23.5	7	127	204	100
RRH-142-70-285	14.2	28.5	7	143	243	110
RRH-142-80-150	14.2	15	8	63	107	200
RRH-142-80-285	14.2	28.5	8	128	195	110
RRH-149-70-190	14.99	19	6.99	107	171	128
RRH-149-70-279	14.99	27.94	6.99	151	237	110
RRH-153-102-285	15.2	28.5	10.2	81	128	99
RRH-153-80-280	15.25	28	8	122	180	99
RRH-153-90-170	15.25	17	9	53	103	120
RRH-157-70-286	15.65	28.57	6.99	164	258	99
RRH-158-79-160	15.8	16	7.9	84	132	100
RRH-159-79-286	15.88	28.57	7.87	148	241	99
RRH-160-43-175	16	17.5	4.3	92	213	126
RRH-160-70-200	16	20	7	111	163	96
RRH-160-70-280	16	28	7	174	247	99
RRH-160-80-160	16	16	8	77	116	100
RRH-160-90-170	16	17	9	61	115	120
RRH-160-90-200	16	20	9	98	124	112
RRH-160-90-280	16	28	9	104	178	99
RRH-160-90-285	16	28.5	9	105	195	99
RRH-160-100-280	16	28	10	91	156	99
RRH-171-88-254	17.07	25.4	8.76	122	180	88
RRH-175-80-285	17.5	28.5	8	139	203	88
RRH-175-83-285	17.5	28.5	8.3	143	242	88
RRH-175-95-285	17.5	28.5	9.5	115	170	88
RRH-175-95-350	17.5	35	9.5	152	253	88
RRH-175-107-285	17.5	28.5	10.7	90	150	88
RRH-180-100-180	18	18	10	80	135	100
RRH-180-100-280	18	28	10	124	209	88
RRH-180-100-290	18	29	10	128	210	88
RRH-186-102-250	18.67	25	10.16	115	178	88
RRH-186-102-286	18.67	28.57	10.16	117	171	88
RRH-190-58-315	19	31.5	5.8	243	323	77
RRH-190-58-350	19	35	5.8	272	340	77
RRH-190-63-350	19	35	6.3	242	324	77
RRH-190-130-290	19	29	13	60	105	77
RRH-259-128-286	25.91	28.57	12.83	127	195	40
RRH-280-160-280	28	28	16	110	169	32
RRH-285-138-286	28.5	28.57	13.77	158	250	24

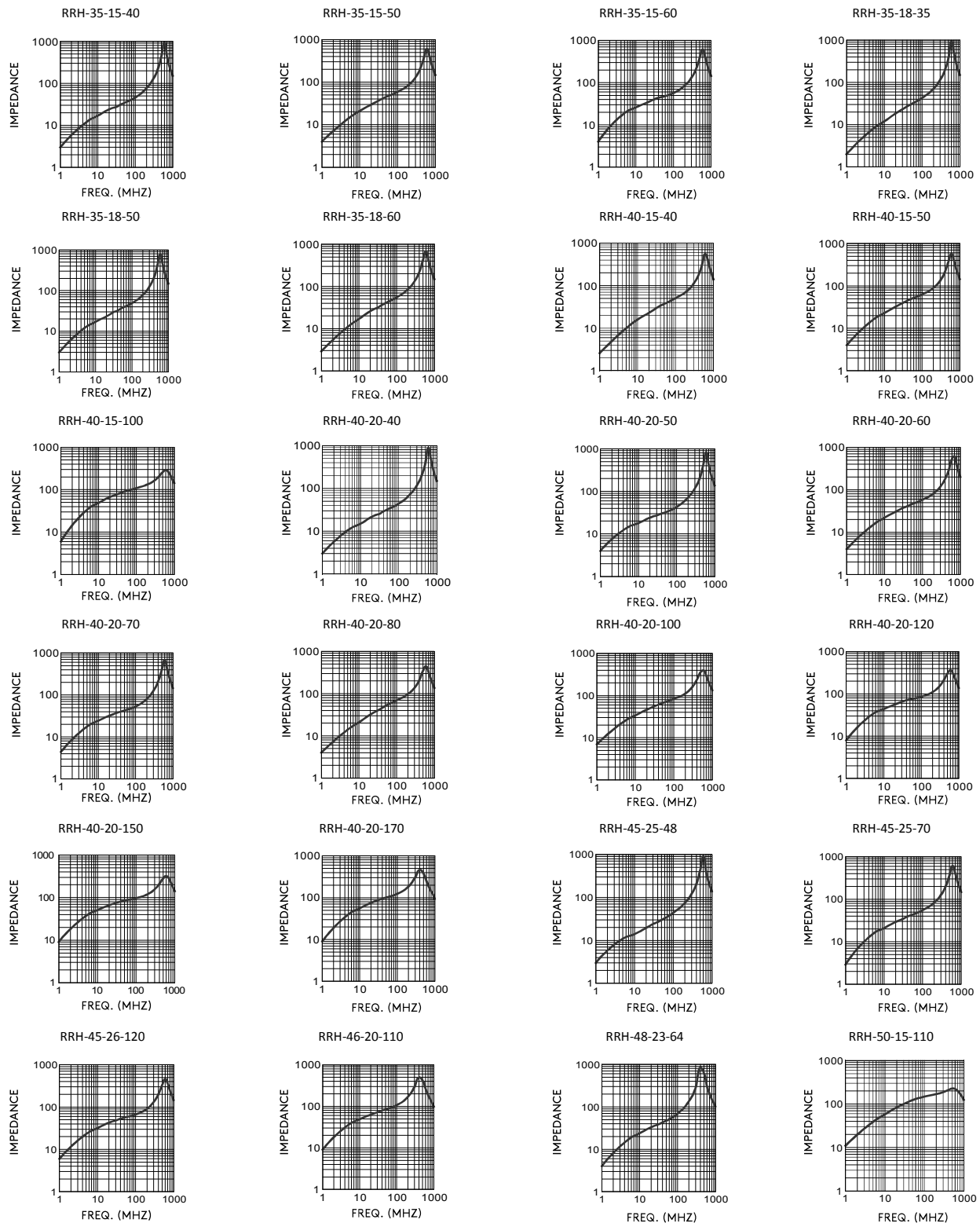
Standard Pack sizes may vary



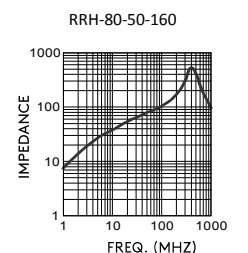
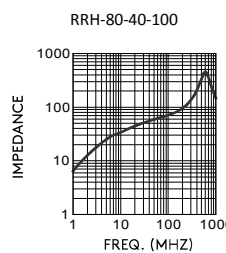
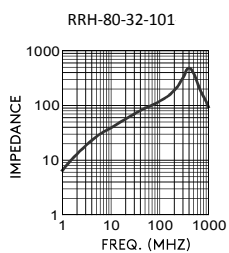
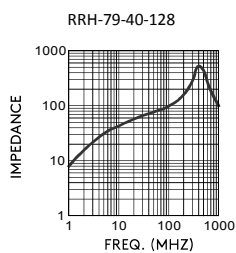
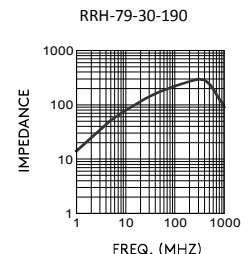
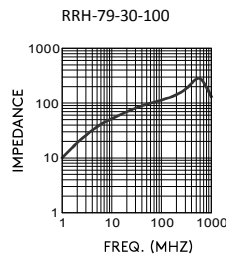
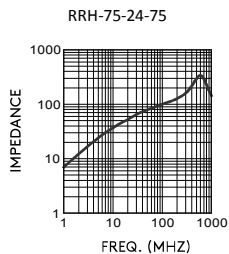
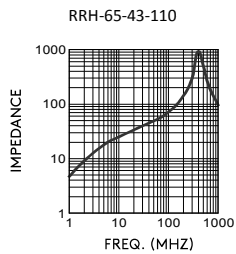
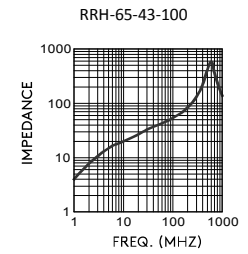
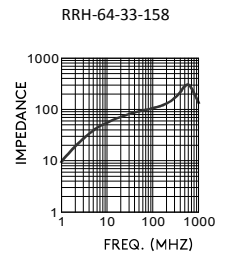
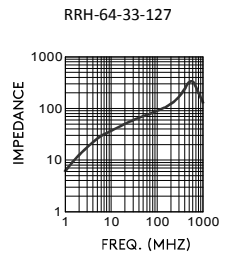
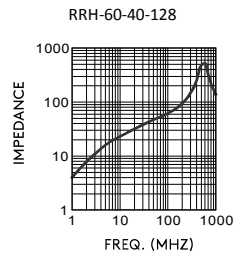
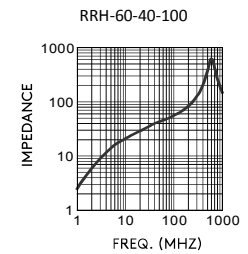
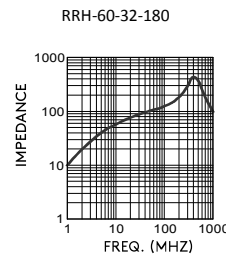
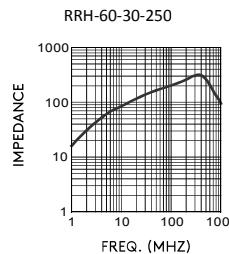
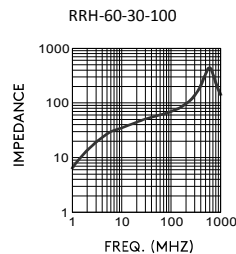
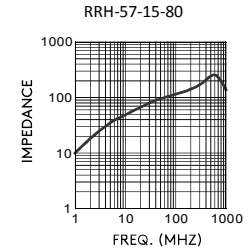
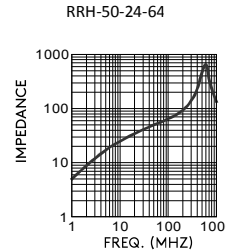
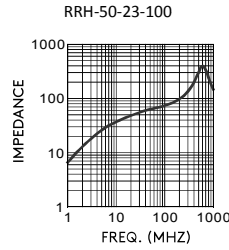
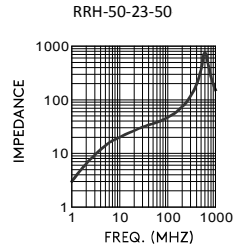
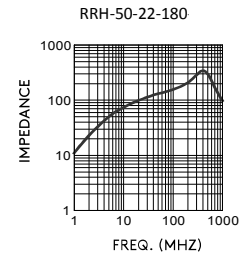
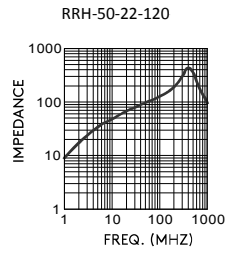
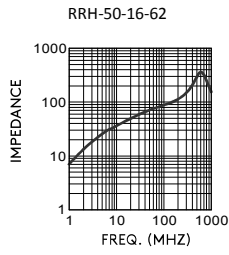
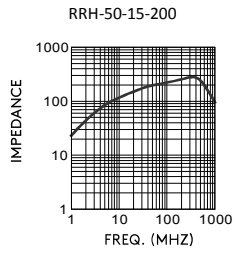
ROUND CABLE CORES – SLEEVE



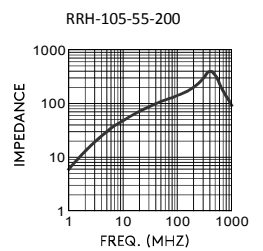
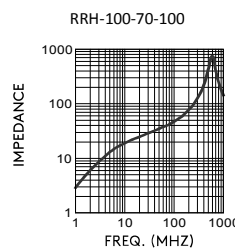
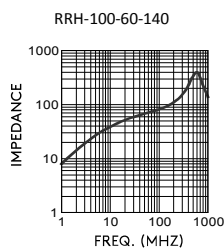
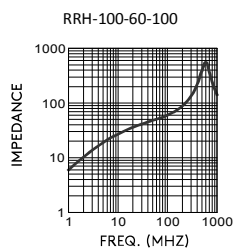
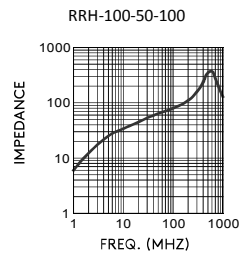
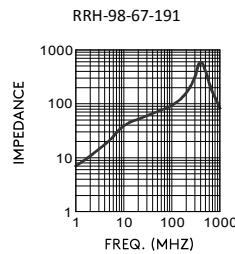
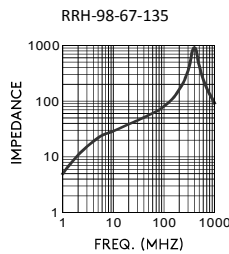
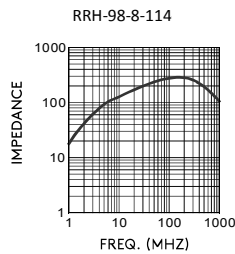
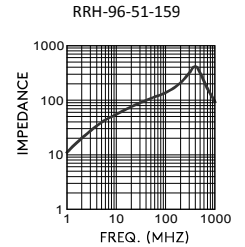
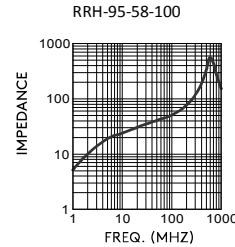
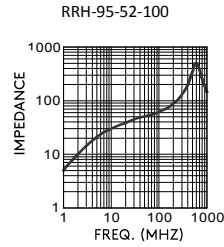
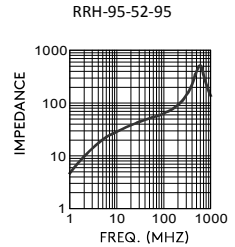
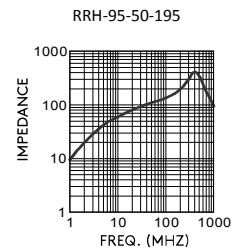
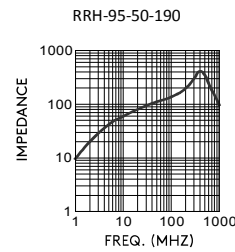
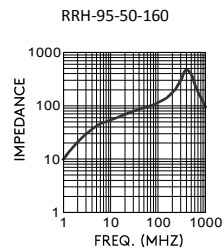
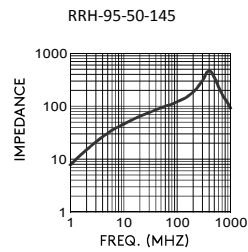
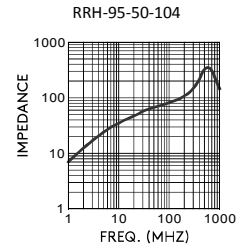
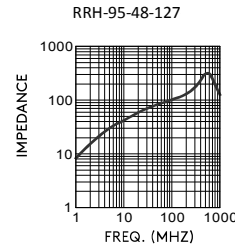
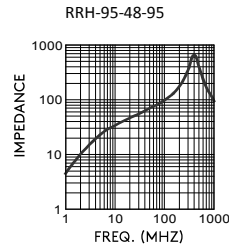
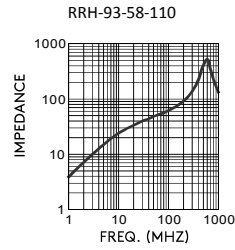
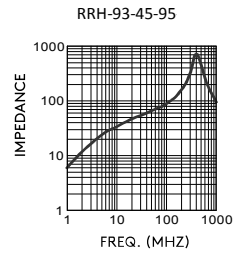
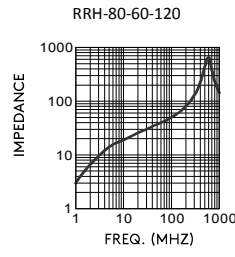
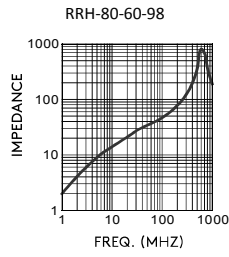
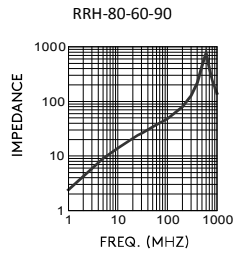
ROUND CABLE CORES – SLEEVE



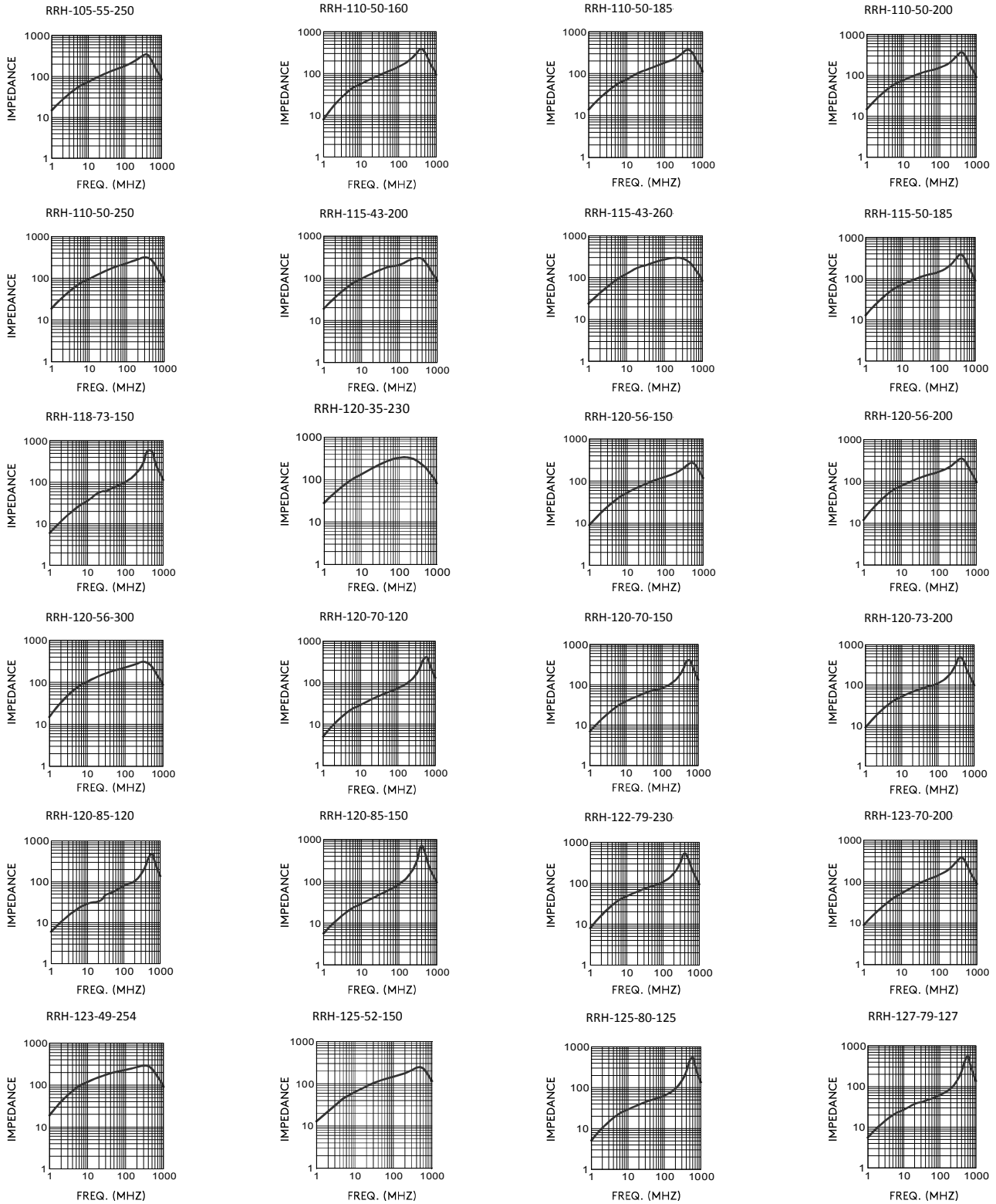
ROUND CABLE CORES – SLEEVE



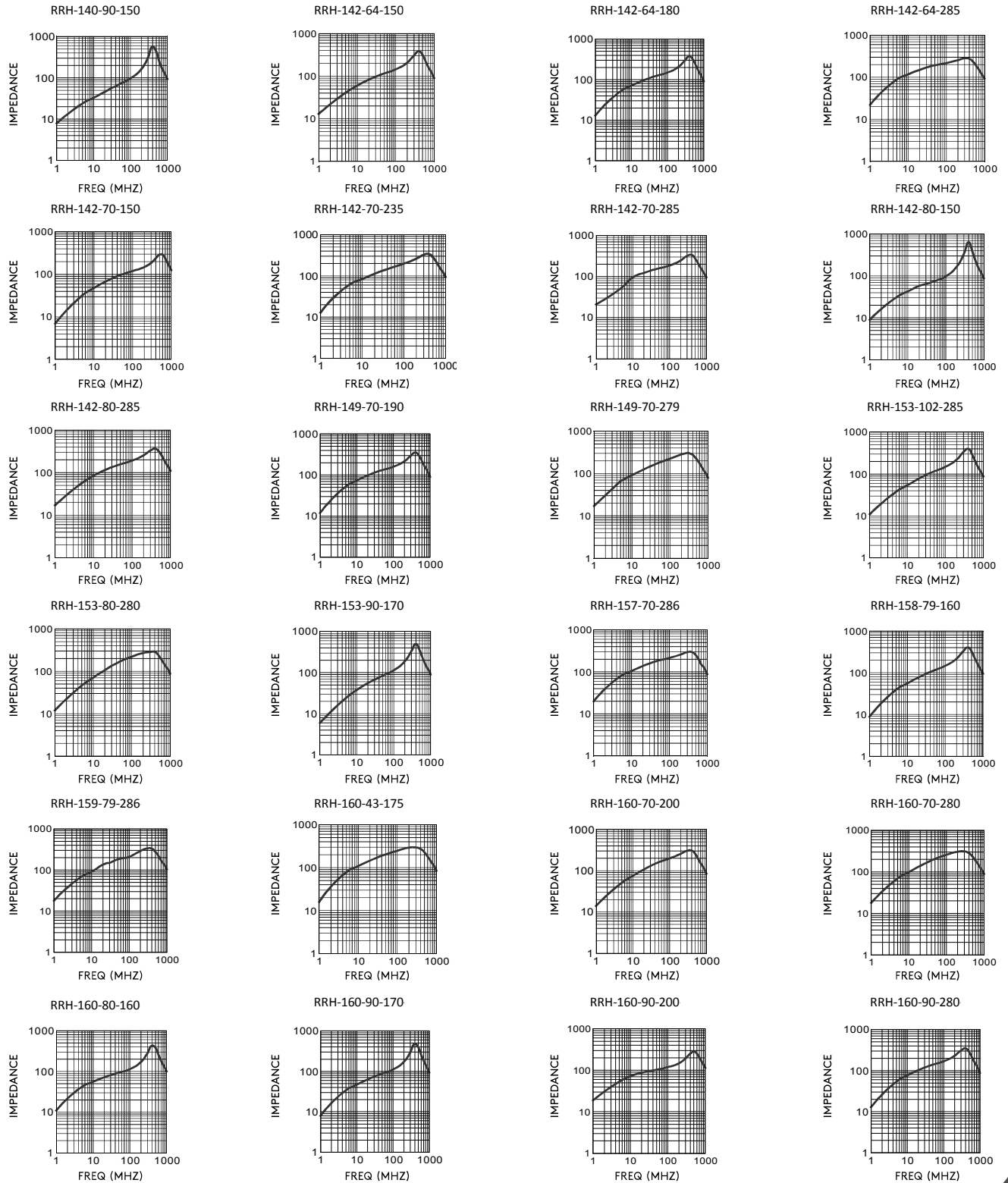
ROUND CABLE CORES – SLEEVE



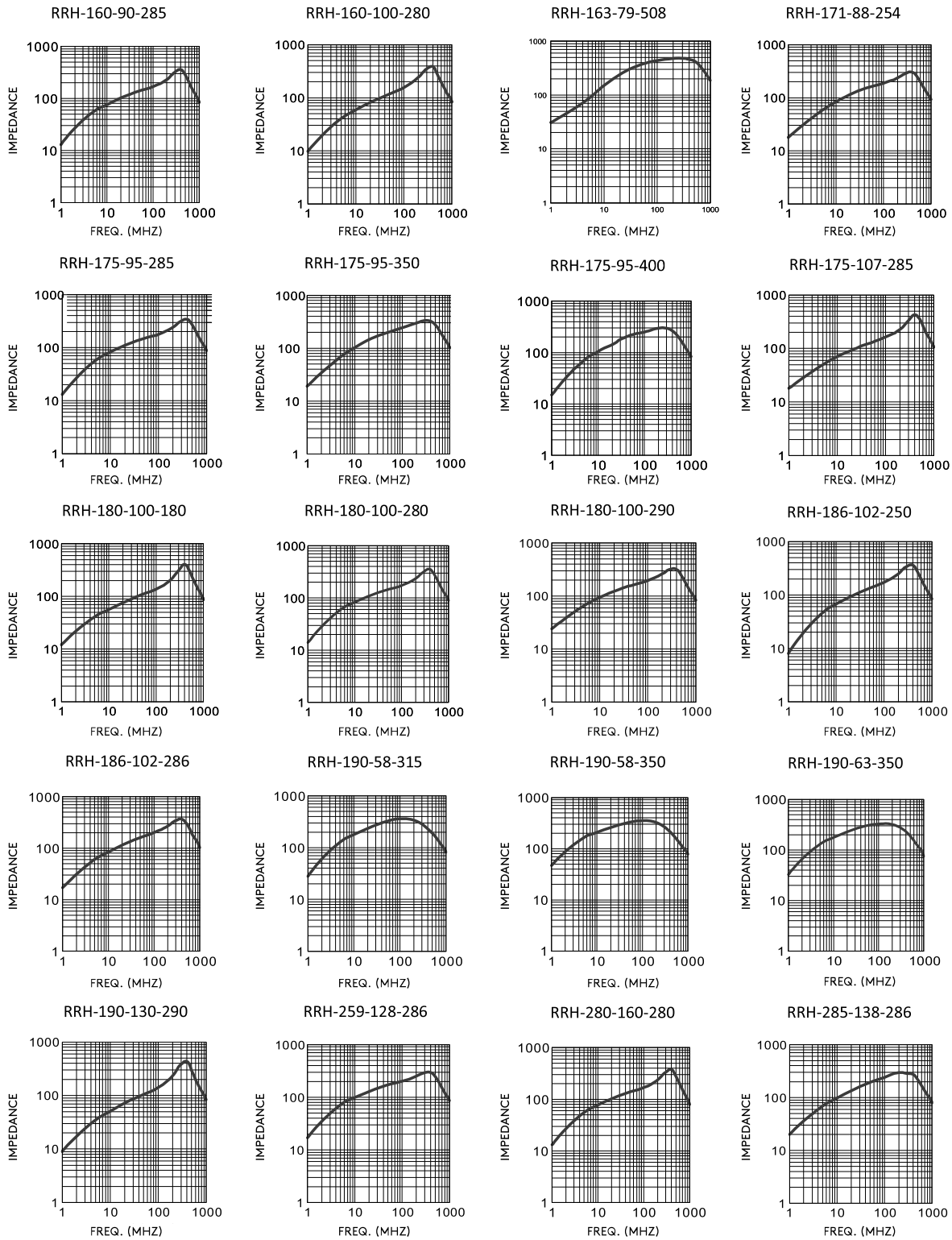
ROUND CABLE CORES – SLEEVE



ROUND CABLE CORES – SLEEVE



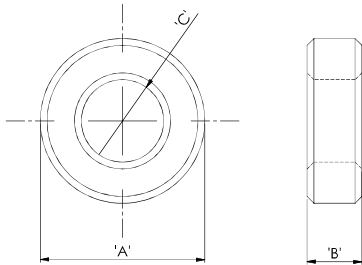
ROUND CABLE CORES - SLEEVE



Toroid Cores

RT

Ferrite Material: K5B RMS-303



Part Number	Dimensions (mm)			Impedance (Ω)		Std Pack Qty
	A	B	C	25MHz	100MHz	
RT-30-10-20	3	2	1	20	42	4000
RT-30-12-20	3	2	1.2	17	38	4000
RT-35-8-25	3.5	3	1	25	52	4000
RT-35-8-30	3.5	3	0.8	31	53	4000
RT-35-10-30	3.5	3	1.0	29	50	4000
RT-35-12-30	3.5	3	1.2	25	45	4000
RT-35-13-30	3.5	3	1.3	26	47	4000
RT-35-13-33	3.5	3.25	1.3	27	48	4000
RT-35-14-30	3.5	3	1.4	22	48	4000
RT-35-14-33	3.5	3	1.4	26	49	4000
RT-35-15-15	3.5	1.54	1.5	15	36	4000
RT-35-15-30	3.5	3	1.5	21	42	4000
RT-35-15-33	3.5	3.3	1.5	21	43	4000
RT-35-17-30	3.5	3	1.7	17	38	4000
RT-35-18-13	3.5	1.3	1.8	11	31	4000
RT-35-18-30	3.5	3	1.8	18	37	4000
RT-39-23-25	3.94	2.54	2.29	15	36	4000
RT-40-15-20	4	2	1.5	19	39	4000
RT-40-15-30	4	3	1.5	23	45	4000
RT-40-20-15	4	1.5	2	13	35	4000
RT-40-20-20	4	2	2	14	37	4000
RT-40-20-30	4	3	2	20	41	4000
RT-40-22-17	4	1.7	2.2	12	31	4000
RT-41-16-40	4.1	4	1.6	31	55	2000
RT-43-28-25	4.3	2.5	2.8	13	35	4000
RT-44-28-14	4.4	1.4	2.8	12	32	5000
RT-45-25-32	4.5	3.2	2.5	18	37	4000
RT-50-15-40	5	4	1.5	30	51	2000
RT-50-20-20	5	2	2	17	37	2000
RT-50-20-40	5	4	2	30	46	2000
RT-50-23-30	5	3	2.3	19	39	2000
RT-60-30-15	6	1.5	3	10	31	2000
RT-60-30-20	6	2	3	15	35	2000
RT-60-30-30	6	3	3	21	40	2000
RT-60-30-38	6	3.8	3	22	43	1000
RT-60-30-40	6	4	3	24	44	1000
RT-60-30-55	6	5.5	3	31	51	1000
RT-65-43-60	6.5	6	4.3	21	42	1000
RT-70-35-40	7	4	3.5	23	46	1000
RT-70-35-60	7	6	3.5	34	59	1000
RT-73-33-43	7.3	4.3	3.3	27	50	1000
RT-75-24-40	7.5	4	2.4	32	62	1000

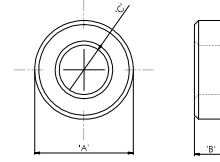
Standard Pack sizes may vary

TOROID CORES

Toroid Cores CONTINUED

RT

Ferrite Material: K5B RMS-303



Part Number	Dimensions (mm)			Impedance (Ω)		Std Pack Qty
	A	B	C	25MHz	100MHz	
RT-76-52-62	7.6	6.2	5.2	21	40	1000
RT-79-40-70	7.9	7	4	33	57	500
RT-80-31-40	8	4	3.1	33	52	1000
RT-80-40-30	8	3	4	17	37	1000
RT-80-40-40	8	4	4	23	46	1000
RT-80-40-60	8	6	4	33	57	500
RT-80-60-50	8	5	6	15	36	500
RT-80-60-70	8	7	6	20	42	500
RT-85-50-30	8.5	3	5	16	34	1000
RT-90-50-30	9	3	5	16	37	1000
RT-90-50-80	9	8	5	38	64	500
RT-93-45-64	9.3	6.35	4.5	32	50	500
RT-94-63-72	9.4	7.2	6.3	22	42	1000
RT-95-46-46	9.5	4.57	4.6	27	47	500
RT-95-48-33	9.5	3.3	4.8	22	45	1000
RT-95-50-48	9.5	4.8	5	22	47	500
RT-95-50-50	9.5	5	5	26	49	500
RT-100-30-60	10	6	3	50	82	500
RT-100-50-50	10	5	5	34	73	500
RT-100-60-30	10	3	6	15	37	1000
RT-100-60-40	10	4	6	20	42	1000
RT-100-60-50	10	5	6	22	41	500
RT-100-60-62	10	6.2	6	25	49	500
RT-100-60-80	10	8	6	33	60	500
RT-100-70-50	10	5	7	17	39	500
RT-100-70-70	10	7	7	22	44	500
RT-100-70-75	10	7.5	7	25	46	500
RT-103-58-102	10.3	10.2	5.8	40	67	500
RT-110-50-90	11	9	5	60	107	200
RT-120-60-40	12	4	6	24	48	500
RT-120-60-60	12	6	6	34	58	500
RT-120-60-80	12	8	6	46	77	500
RT-120-70-55	12	5.5	7	26	49	500
RT-120-70-60	12	6	7	28	48	500
RT-125-80-64	12.5	6	8	24	46	500
RT-125-80-120	12.5	12	8	36	58	200
RT-127-79-64	12.7	6.35	7.9	26	68	500
RT-130-70-30	13	3	7	17	39	500
RT-130-70-55	13	5.5	7	27	50	300
RT-130-70-60	13	6	7	28	51	500
RT-130-70-70	13	7	7	32	56	200
RT-130-71-127	13	12.7	7.1	60	106	200
RT-140-80-50	14	5	8	26	50	500
RT-140-80-70	14	7	8	28	50	500
RT-140-90-50	14	5	9	19	37	500
RT-142-64-102	14.2	10.16	6.35	57	95	200
RT-142-64-135	14.2	13.5	6.35	75	125	200
RT-142-80-120	14.2	12	8	49	76	200
RT-145-102-80	14.5	8	10.2	29	69	200
RT-150-105-120	15	12	10.5	37	62	200
RT-159-79-143	15.88	14.27	7.87	79	121	100
RT-160-80-120	16	12	8	59	95	200
RT-160-90-120	16	12	9	55	87	200
RT-160-100-70	16	7	10	32	71	300
RT-160-100-80	16	8	10	29	55	200
RT-160-100-100	16	10	10	43	85	150
RT-160-120-80	16	8	12	26	48	200
RT-160-120-150	16	15	12	33	58	200
RT-165-82-130	16.5	13	8.2	70	125	120
RT-165-82-160	16.5	16	8.2	83	140	120
RT-165-92-75	16.5	7.5	9.2	35	70	200
RT-175-80-100	17.5	10	8	62	94	98
RT-175-95-50	17.5	5	10	22	44	200
RT-175-95-64	17.5	6	9.5	31	53	200
RT-175-95-70	17.5	7	9.5	30	54	200
RT-175-95-110	17.5	11	9.5	55	96	200

Standard Pack sizes may vary



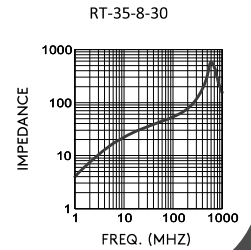
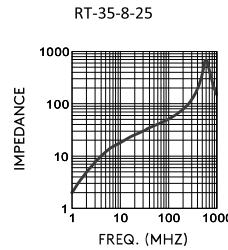
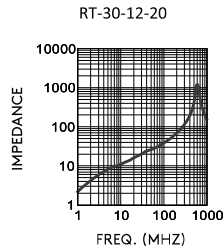
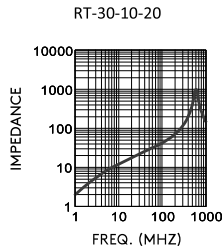
Toroid Cores CONTINUED

RT

Ferrite Material: K5B RMS-303

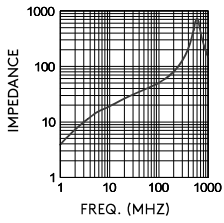
Part Number	Dimensions (mm)			Impedance (Ω)		Std Pack Qty
	A	B	C	25MHz	100MHz	
RT-175-95-127	17.5	13	9.5	59	95	100
RT-175-95-135	17.5	14	9.5	63	115	100
RT-175-95-150	17.5	15	9.5	70	113	112
RT-175-107-80	17.5	8	10.7	33	60	200
RT-180-100-60	18	6	10	31	55	200
RT-180-100-100	18	10	10	47	77	200
RT-180-100-150	18	15	10	69	123	100
RT-187-102-143	18.67	14.27	10.16	70	119	100
RT-187-102-170	18.67	17.02	10.16	75	125	100
RT-190-100-100	19	10	10	54	102	100
RT-190-120-80	19	8	12	32	72	200
RT-190-120-100	19	10	12	37	78	100
RT-200-100-50	20	5	10	28	68	140
RT-200-100-80	20	8	10	38	62	100
RT-200-100-100	20	10	10	50	82	100
RT-200-120-100	20	10	12	40	68	84
RT-205-102-100	20.5	10	10.2	53	86	80
RT-212-127-60	21.2	6	12.7	27	52	200
RT-220-135-64	22	6.35	13.5	28	53	200
RT-220-135-80	22	8	13.5	37	78	100
RT-220-140-65	22	7	14	28	68	84
RT-220-140-80	22	8	14	33	73	100
RT-220-140-100	22	10.0	14	42	90	84
RT-220-140-120	22	12	14	40	85	84
RT-221-137-127	22.1	12.7	13.72	48	83	100
RT-225-138-64	22.5	6.4	13.8	25	47	200
RT-225-138-127	22.5	12.7	13.8	46	71	50
RT-230-135-64	23	6.35	13.5	28	53	200
RT-236-114-140	23.6	14	11.4	80	133	60
RT-236-150-60	23.6	6.0	15	26	70	72
RT-236-150-114	23.6	11	15	43	85	100
RT-250-150-80	25	8	15	38	79	100
RT-250-150-100	25	10	15	44	87	50
RT-250-150-120	25	12	15	53	97	60
RT-250-150-150	25	15	15	61	105	60
RT-254-127-64	25.4	6.35	12.7	39	80	100
RT-259-128-213	25.91	21.3	12.8	106	174	40
RT-260-130-127	26	12.7	13	74	125	50
RT-280-160-75	28	8	16	33	59	100
RT-280-160-130	28	13	16	55	100	50
RT-280-160-170	28	17	16	71	120	50
RT-280-160-200	28	20	16	85	155	40
RT-290-190-75	29	7.50	19	26	70	100
RT-290-190-77	29	7.7	19	33	76	50
RT-290-190-138	29	13.8	19	46	94	40
RT-310-190-70	31	7	19	35	77	40
RT-310-190-80	31	8	19	30	55	40
RT-310-190-160	31	16	19	68	115	40
RT-310-190-222	31	22	19	88	146	32
RT-360-250-70	36	7.0	25	23	63	36
RT-360-250-127	36	13	25	39	84	24
RT-406-274-150	40.6	15	27.4	55	106	18
RT-594-348-128	59.4	12.8	34.8	58	118	10

Standard Pack sizes may vary

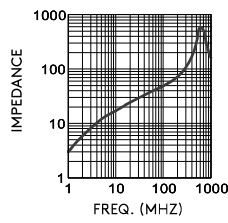


TOROID CORES

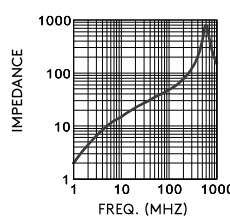
RT-35-10-30



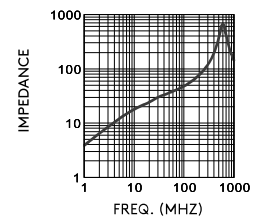
RT-35-12-30



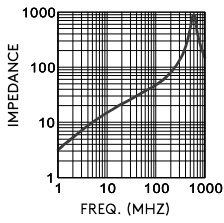
RT-35-13-30



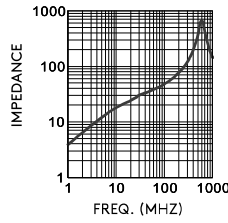
RT-35-13-33



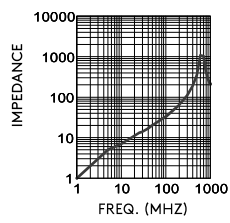
RT-35-14-30



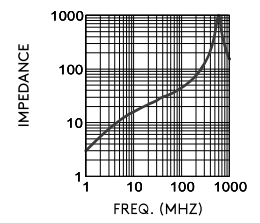
RT-35-14-33



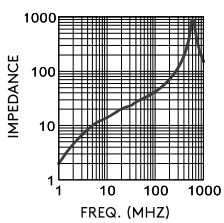
RT-35-15-15



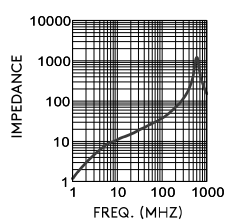
RT-35-15-30



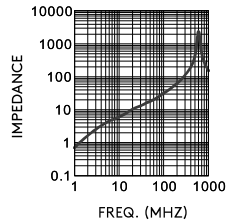
RT-35-15-33



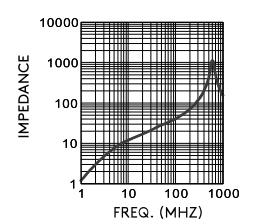
RT-35-17-30



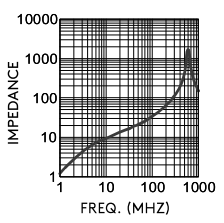
RT-35-18-13



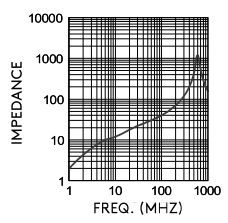
RT-35-18-30



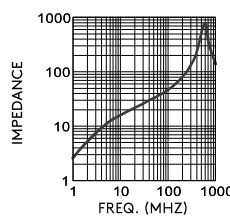
RT-39-23-25



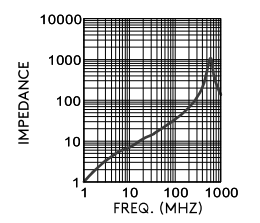
RT-40-15-20



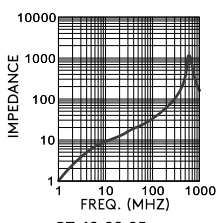
RT-40-15-30



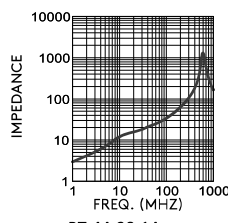
RT-40-20-15



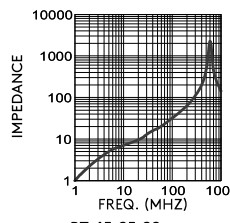
RT-40-20-20



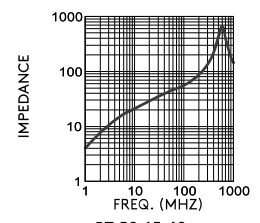
RT-40-20-30



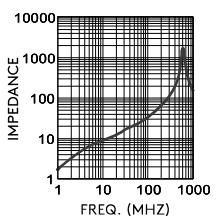
RT-40-22-17



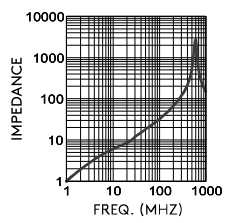
RT-41-16-40



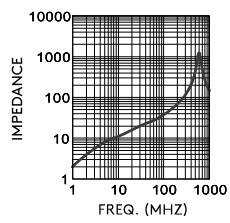
RT-43-28-25



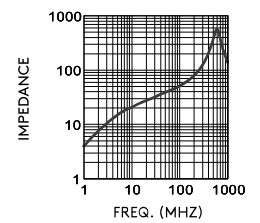
RT-44-28-14

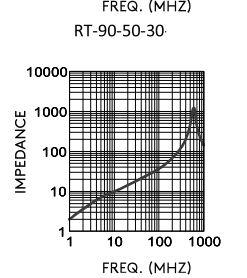
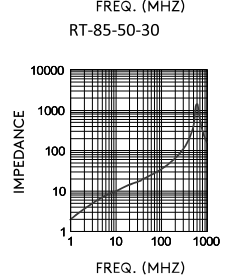
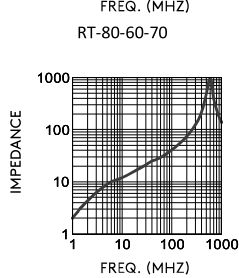
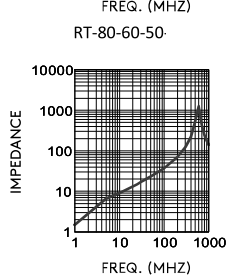
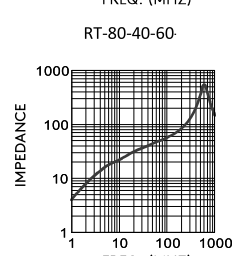
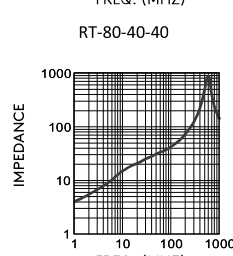
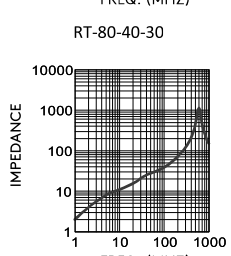
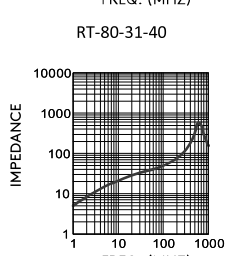
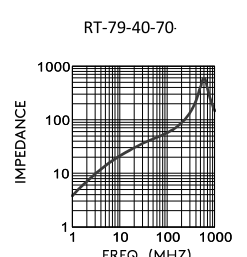
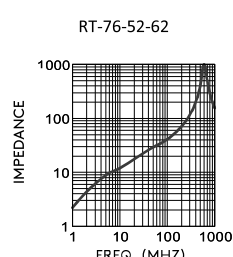
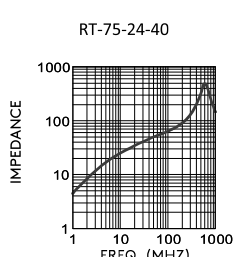
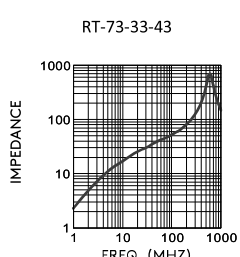
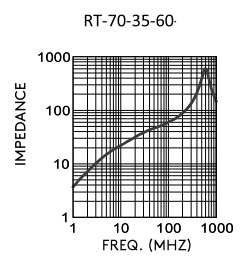
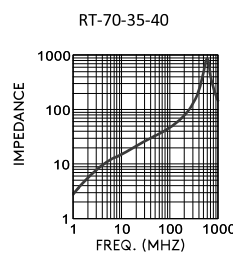
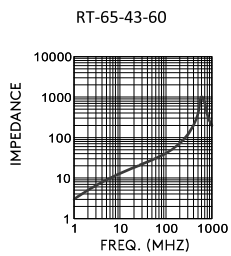
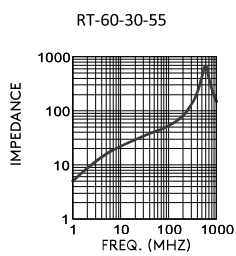
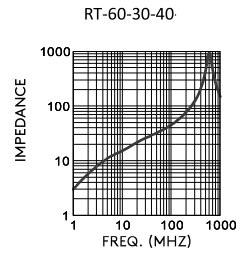
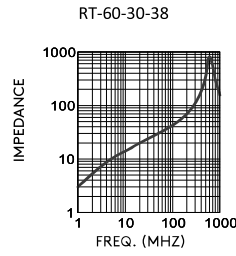
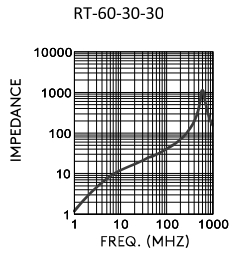
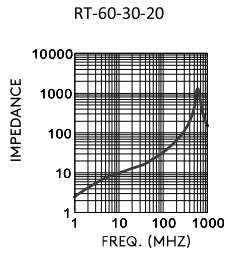
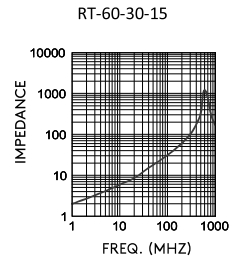
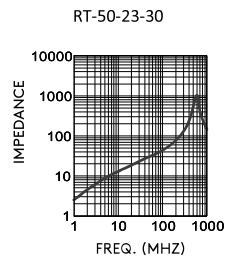
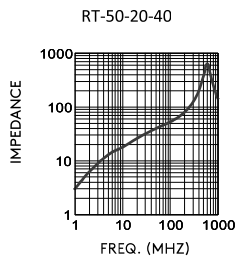
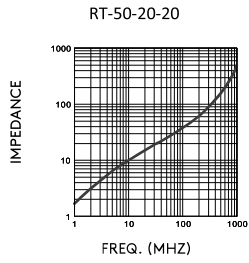


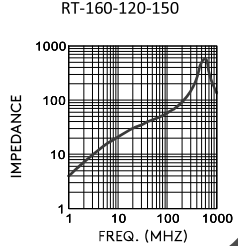
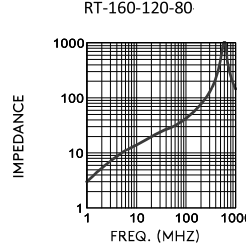
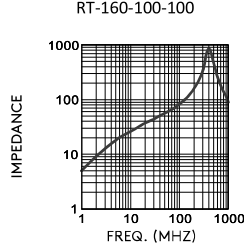
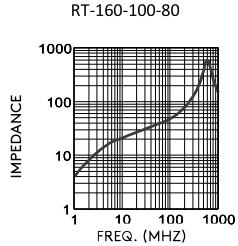
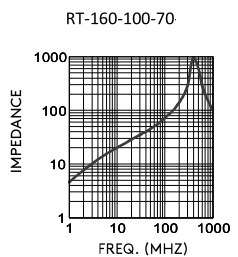
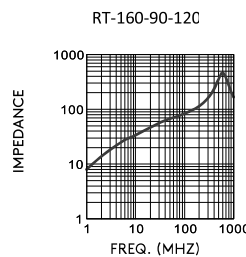
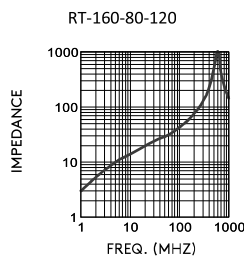
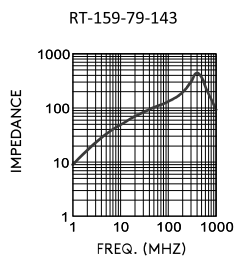
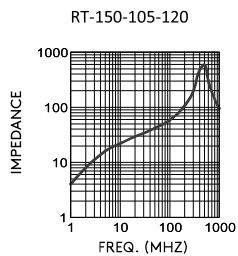
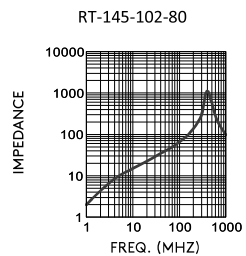
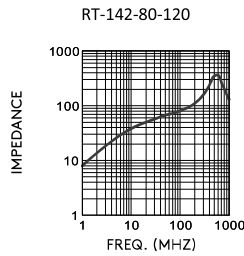
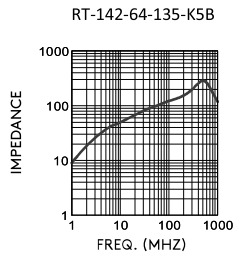
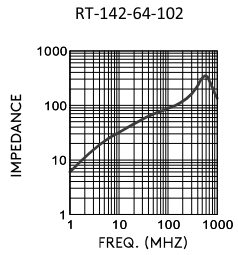
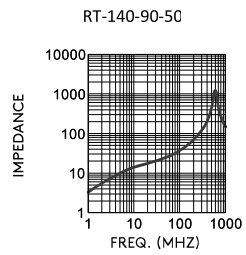
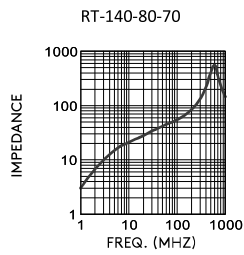
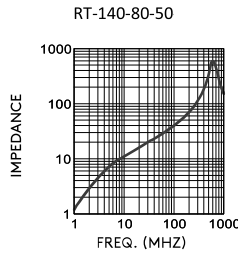
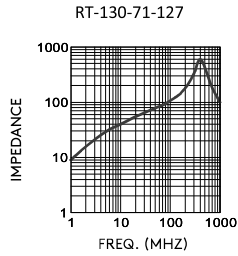
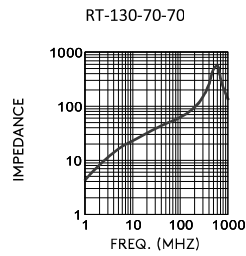
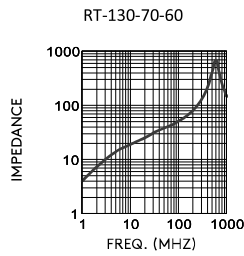
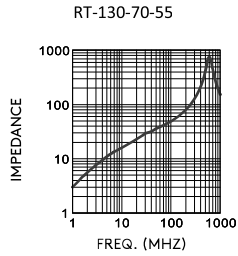
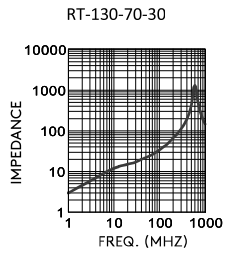
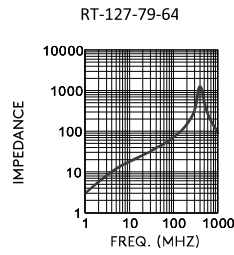
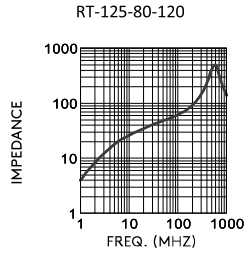
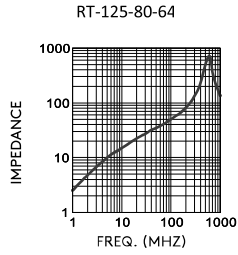
RT-45-25-32

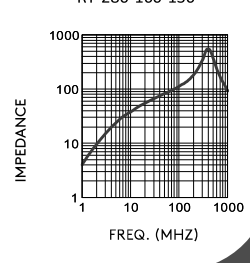
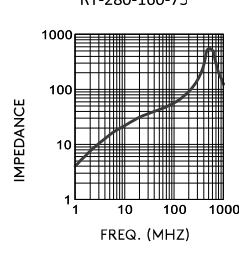
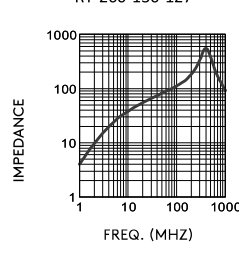
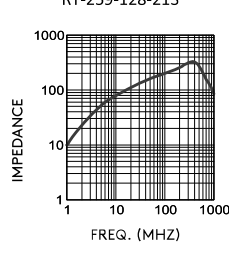
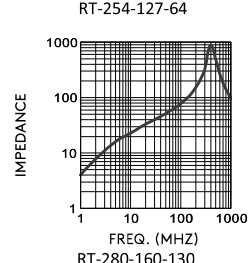
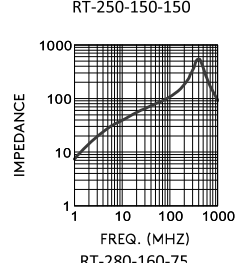
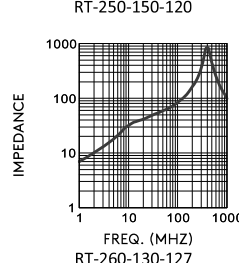
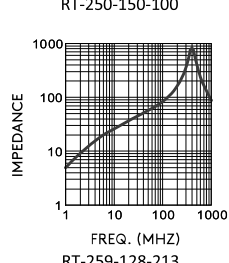
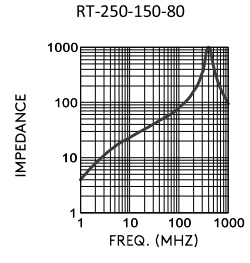
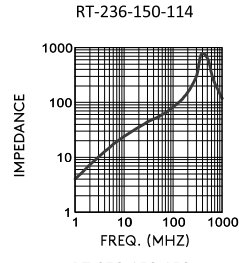
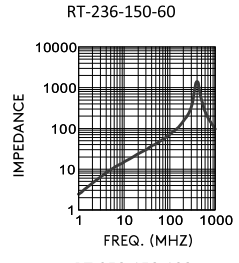
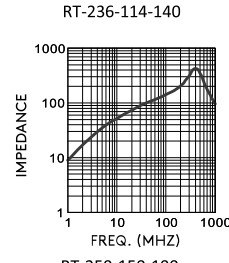
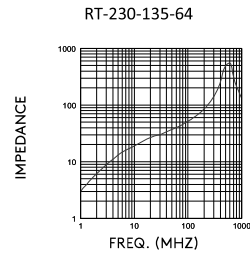
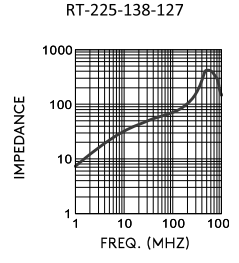
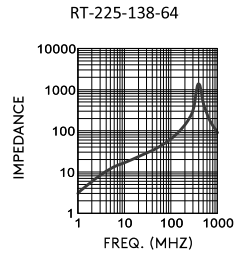
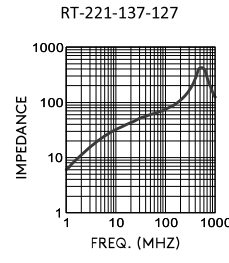
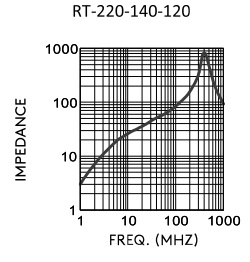
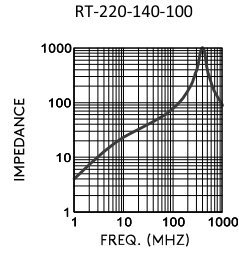
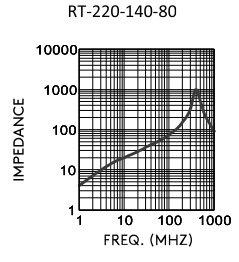
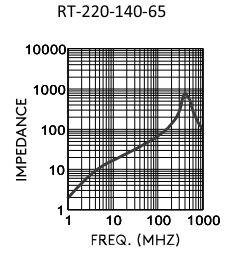
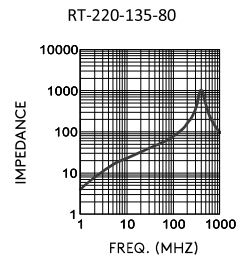
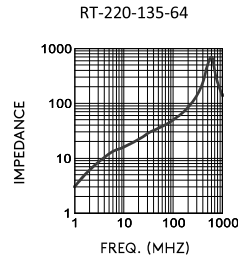
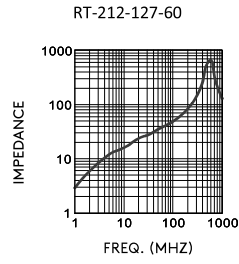
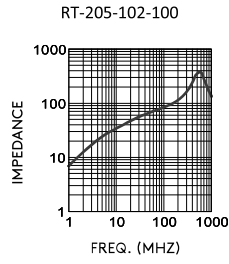


RT-50-15-40



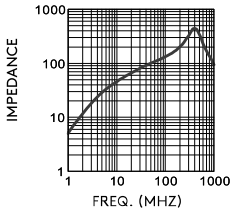




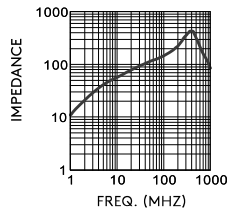


TOROID CORES

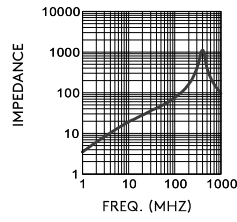
RT-280-160-170



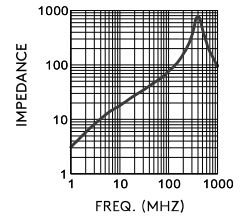
RT-280-160-200



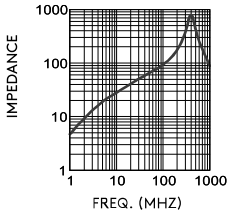
RT-290-190-75



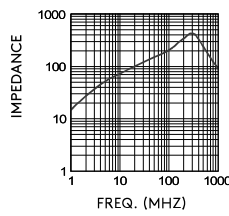
RT-290-190-77



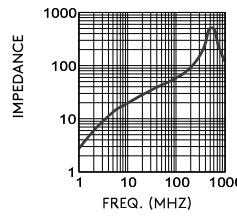
RT-290-190-138



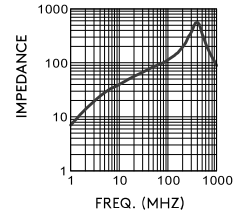
RT-310-190-70



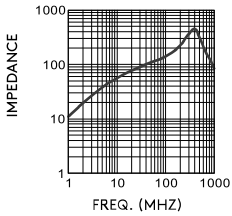
RT-310-190-80



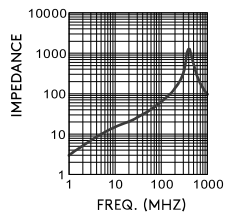
RT-310-190-160



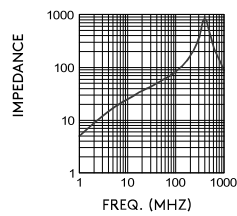
RT-310-190-222



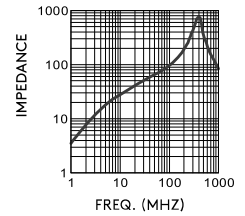
RT-360-250-70



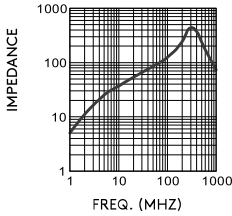
RT-360-250-127



RT-406-274-150



RT-594-348-128



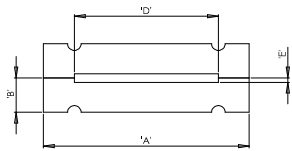
Ribbon Cable Split Cores

RFP

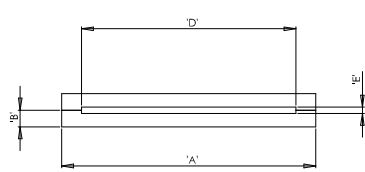
Ferrite Material: A5 RMS-303

Casing Material: Nylon 6/6. RMS-244

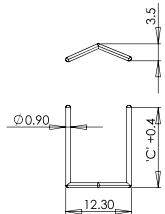
Metal Clip & Spring: Stainless Steel RMS-305



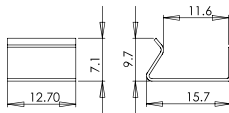
Type 1



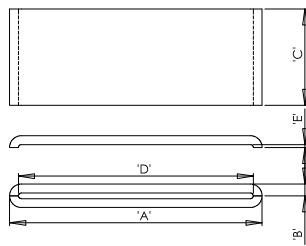
Type 2



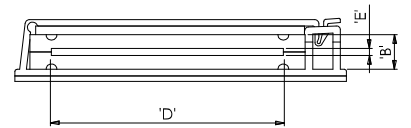
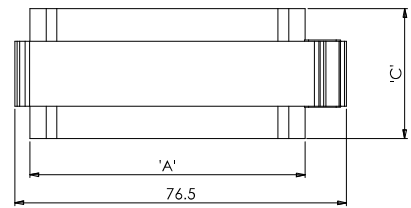
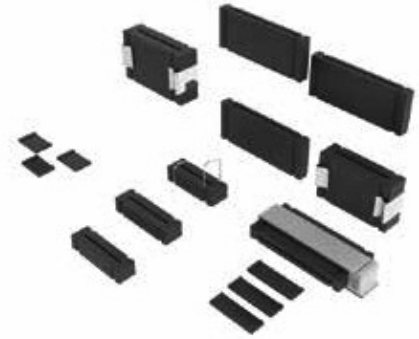
Spring



Metal Clip



Type 3



Type 4 with Adhesive Base

Part Number	Type	Metal clip or spring	Dimensions (mm)					Impedance (Ω)		Std Pack Qty
			A	B	C	D	E	25MHz	100MHz	
RFP2-10-10-A5	2	-	16.5	2.00	10.25	12.50	1.20	27	69	240
RFP3-16-12-A5	2	-	25.0	2.80	12.00	21.00	2.20	28	90	144
RFP2-18-15-A5	3	-	28.5	2.25	15.00	23.50	0.84	36	99	385
RFP2-20-12-A5	2	-	32.0	2.10	12.00	27.00	0.80	30	87	315
RFP2-25-12-A5	2	-	37.1	3.30	12.70	32.00	1.80	36	106	66
RFP1-20-10-A5	1	SPRING	38.0	6.35	10.00	26.60	1.60	45	107	60
RFP1-20-25-A5	1	METAL CLIP	38.0	6.35	25.40	26.60	1.60	105	175	15
RFP3-27-12-A5	3	-	40.0	2.00	12.00	35.00	1.00	16	73	72
RFP2-27-12-A5	2	-	40.0	3.25	12.00	35.00	1.10	27	66	72
RFP1-26-10-M-A5	1	SPRING	45.0	6.35	10.00	34.40	1.60	43	110	60
RFP1-26-28-A5	1	METAL CLIP	45.0	6.35	28.50	34.40	1.60	102	189	15
RFP2-34-5-A5	3	-	49.6	3.25	5.00	44.00	1.10	15	50	162
RFP2-34-12-A5	3	-	49.6	3.25	12.00	44.00	1.10	23	70	72
RFP1-34-10-A5	1	SPRING	55.1	6.35	10.00	43.70	1.60	36	104	40
RFP1-34-28-A5	1	METAL CLIP	55.1	6.35	28.50	43.70	1.60	80	181	10
RFP1-40-13-A5	1	SPRING	63.5	6.35	13.00	52.00	2.20	45	114	20
RFP1-40-15-A5	1	SPRING	63.5	6.35	15.00	52.00	1.60	50	124	20
RFP1-40-28-M-A5	1	METAL CLIP	63.5	6.35	28.50	52.00	1.60	77	172	10
RFP4-40-28-MPA5	4	PLASTIC with adhesive base	63.5	12.70	28.50	52.00	3.20	77	172	16
RFP1-50-28-A5	1	METAL CLIP	76.2	6.35	28.50	65.30	1.70	70	200	10

Standard Pack sizes may vary



031 10 50 00

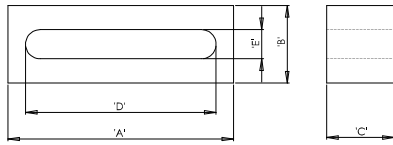


sales@essentracomponents.se

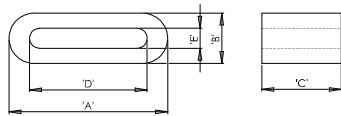
Flat Cable Sleeve Cores

RFS

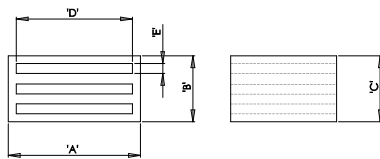
Ferrite Material: A5, RMS-303 / K5B, RMS-303



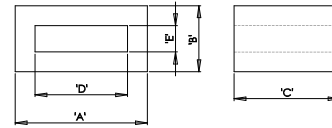
Type 1



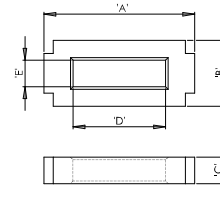
Type 2



Type 4



Type 3



Type 5

Part Number	Type	Dimensions (mm)					Impedance (Ω)		Std Pack Qty
		A	B	C	D	E	25MHz	100MHz	
RFS2-8-12-A5	2	14.7	2.75	12	11	0.7	28	63	192
RFS2-9-5-A5	2	16	3	5	11.5	0.5	14	40	375
RFS2-9-8-3-A5	2	16	3	8	11.5	0.5	24	68	200
RFS2-9-4-A5	2	16	4	4	11.5	0.5	15	40	450
RFS2-9-6-A5	2	16	5	6	11.5	0.5	20	48	352
RFS2-9-8-A5	2	16	5	8	11.5	0.5	29	72	288
RFS2-9-12-A5	2	16	5	12	11.5	0.5	41	73	160
RFS2-9-12-2-A5	2	16	5	12	11.5	1.2	37	69	160
RFS3-2-9-K5B*	3	5	3	9	3	1	46	74	1000
RFS3-3-9-K5B*	3	5.5	3	9	4	1.4	32	57	1000
RFS2-3-9-K5B*	3	6.5	3.8	9	4	1.4	41	72	500
RFS3-4-9-A5	3	7.5	5.3	9	5	2.8	32	59	500
RFS3-4-12-A5	3	7.5	5.3	12	5	2.8	42	86	500
RFS2-5-8-A5	3	9.1	5.6	7.8	7.2	3.7	19	41	500
RFS3-5-12-A5	3	9.5	3	12	7.6	0.8	38	79	500
RFS3-6-3-A5	3	10	3.2	3	8	1	13	42	1000
RFS3-6-7-A5	3	10	3.2	7	8	1	25	65	1000
RFS1-6-8-A5	3	10	3.2	8	8	1	28	60	1000
RFS5-7-2-A5	5	13.84	3.94	1.88	9.78	1.52	10	32	2000
RFS2-9-15-A5	2	16	5	15	11.5	0.5	50	90	144
RFS2-9-20-A5	2	16	5	20	11.5	0.5	60	120	126
RFS2-11-10-A5	2	18	5	8	14	1	45	164	252
RFS2-11-20-A5	2	18.9	6.5	20	14	1.8	61	123	84
RFS2-11-12-A5	2	19	6.5	12	14	1.8	38	62	144
RFS2-13-15-A5	2	20.5	3.5	15	16.5	0.8	36	97	126
RFS1-15-7-2-A5	1	23.3	2.5	7	20	0.9	14	41	240
RFS1-15-7-A5	1	23.3	3	7	20	0.9	17	45	240
RFS1-15-10-A5	1	23.3	3	10	20	0.9	18	47	168
RFS1-15-12-A5	1	23.3	3	12	20	0.9	23	58	144
RFS1-15-15-A5	1	23.3	3	15	20	0.9	24	59	108
RFS1-14-15-A5	1	23.8	3.2	15	18.7	1.1	27	77	120
RFS2-14-7-A5	2	23.8	6.3	7	18.7	1.1	21	47	240
RFS2-14-13-A5	2	23.8	6.3	12.5	18.7	1.1	46	96	120

Standard Pack sizes may vary

*K5B, RMS-303, all others A5, RMS-303



031 10 50 00



sales@essentracomponents.se

FLAT CABLE CORES

Flat Cable Sleeve Cores CONTINUED

RFS

Ferrite Material: A5 RMS-303



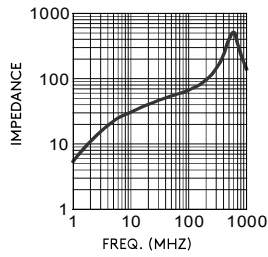
Part Number	Type	Dimensions (mm)					Impedance (Ω)		Std Pack Qty
		A	B	C	D	E	25MHz	100MHz	
RFS2-2-30-A5	2	24	12	30	15	4	120	191	48
RFS2-15-12-A5	2	24.5	5	12	20	0.5	35	70	144
RFS2-15-20-A5	2	24.5	5	20	20	0.5	41	78	84
RFS2-17-20-A5	2	25	3.7	20	22	0.7	43	114	56
RFS2-16-12-A5	2	25.5	3	12	21.5	0.65	27	87	132
RFS1-16-15-A5	1	25.5	4.5	15	21.5	0.65	39	110	144
RFS1-17-15-A5	1	25.5	5	15	21.5	0.65	48	126	108
RFS2-18-8-A5	2	28.5	6.5	8	23.5	0.8	28	65	170
RFS2-18-15-A5	2	28.5	6.5	15	23.5	1	44	91	90
RFS2-18-18-A5	2	28.5	6.5	18	23.5	1	55	127	80
RFS2-18-10-A5	2	28.6	7.7	10	23.5	1.7	31	71	140
RFS2-22-8-A5	2	31	3	8	27	1	13	42	160
RFS2-22-12-A5	2	31	3	12	27	1	19	56	110
RFS2-22-20-A5	2	31	4	20	27	0.7	42	121	60
RFS2-22-9-A5	2	31	5	9	27	1	29	88	150
RFS2-20-12-A5	2	31	5	12	27	1	28	75	110
RFS2-21-18-A5	2	31	5	18	27	1	34	94	70
RFS2-21-25-A5	2	32	4	25	27	0.7	51	142	36
RFS2-22-25-A5	2	32	6	25	28	0.85	59	146	36
RFS4-21-16-A5	4	32	11.8	16	27	1	76	188	80
RFS2-21-8-A5	2	33.5	6.5	8	27	1.3	21	53	136
RFS2-21-10-A5	2	33.5	6.5	10	27	1.3	26	57	84
RFS2-21-12-A5	2	33.5	6.5	12	27	1.3	30	66	70
RFS2-21-15-A5	2	33.5	6.5	15	27	1.3	36	78	72
RFS2-21-20-A5	2	33.5	6.5	20	27	1.3	58	149	56
RFS2-24-18-A5	2	36	6.5	18	31	0.6	52	147	64
RFS2-24-8-A5	2	36	7.5	8	31	1	29	79	48
RFS2-24-20-A5	2	36	7.5	20	31	1	54	122	32
RFS2-24-30-A5	2	36	7.5	30	31	1	72	174	32
RFS2-24-36-A5	2	36	7.5	36	31	1	92	192	24
RFS2-25-12-A5	2	36	5	12	32.4	0.8	29	88	96
RFS2-26-12-A5	2	38.5	4	12	35	0.8	25	68	72
RFS2-26-15-A5	2	38.5	4	15	35	0.8	31	100	56
RFS1-20-25-A5	1	38.53	12.06	25.4	26.77	1.9	100	180	30
RFS2-27-6-A5	2	40	6.5	6	35	1.3	16	45	144
RFS2-27-8-A5	2	40	6.5	8	35	1.3	23	58	96
RFS2-27-10-A5	2	40	6.5	10	35	1.3	25	64	84
RFS2-27-12-A5	2	40	6.5	12	35	1.3	28	69	72
RFS2-27-12-2-A5	2	40	6.5	12	35	2	24	59	72
RFS2-27-15-A5	2	40	6.5	15	35	1.3	32	85	54
RFS2-27-18-A5	2	40	6.5	18	35	1.3	36	98	48
RFS2-27-20-A5	2	40	6.5	20	35	1.3	41	105	42
RFS3-4-5-A5	3	40	11.4	5	32	7.4	12	36	96
RFS1-27-18-A5	1	41	12.5	18	34.4	1.5	60	136	24
RFS3-27-18-A5	3	45	12.7	18	35	1.8	51	114	42
RFS3-27-10-A5	3	45	12.7	10	35	1.8	39	89	48
RFS1-27-28-A5	1	45.1	12.5	28.5	34.4	1.5	95	195	24
RFS2-30-12-A5	2	45.2	6.5	12	40	1.3	27	70	72
RFS2-30-15-A5	2	45.2	6.5	15	40	1.3	31	70	54
RFS2-34-8-A5	2	49.6	6.5	8	44	1.3	17	50	96
RFS2-34-12-A5	2	49.6	6.5	12	44	1.3	25	66	72
RFS2-34-15-A5	2	49.6	6.5	15	44	1.3	31	94	54
RFS2-34-12-2-A5	2	49.6	7	12	44	1.8	25	66	66
RFS2-35-12-A5	2	50	6.5	12	44.9	1.4	23	62	72
RFS2-40-12-A5	2	57.6	6.5	12	52	1.3	25	75	48
RFS2-40-20-A5	2	58.6	7.5	20	52	1.3	43	119	30
RFS1-38-13-A5	1	60	12	12.7	48.5	2.2	40	95	30
RFS2-43-12-A5	2	60.6	6.50	12	55.2	1.3	28	92	48

Standard Pack sizes may vary

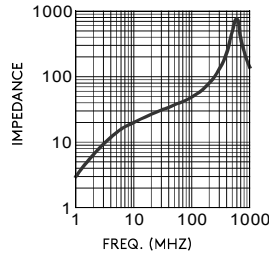


FLAT CABLE CORES

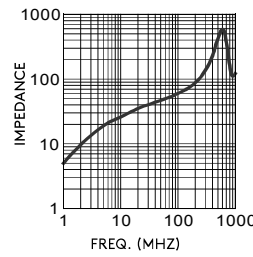
RFS3-2-9-K5B



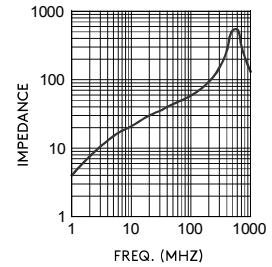
RFS3-3-9-K5B



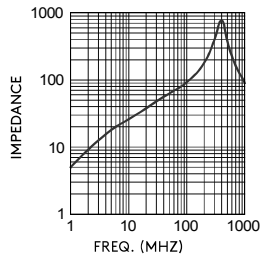
RFS2-3-9-K5B



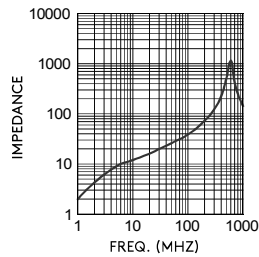
RFS3-4-9-A5



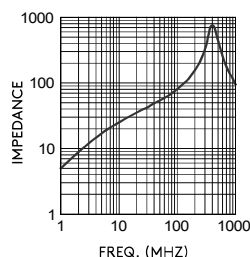
RFS3-4-12-A5



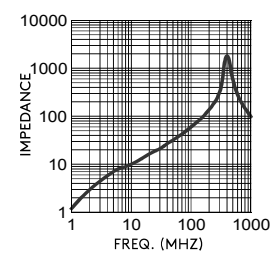
RFS2-5-8-A5



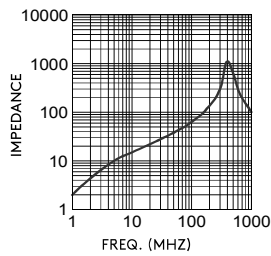
RFS3-5-12-A5



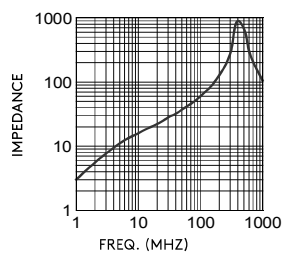
RFS3-6-3-A5



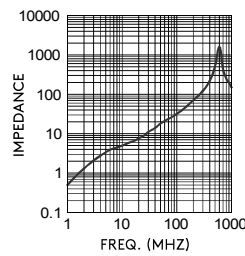
RFS3-6-7-A5



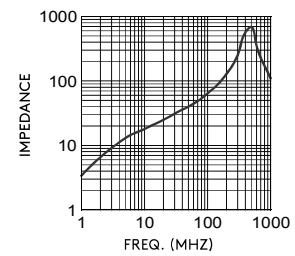
RFS1-6-8-A5



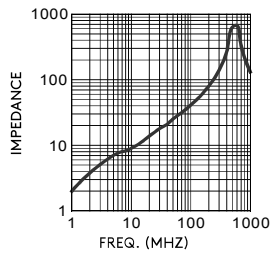
RFS5-7-2-A5



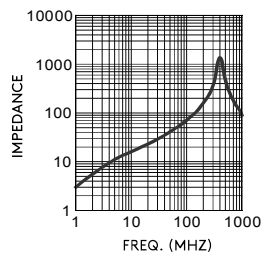
RFS2-8-12-A5



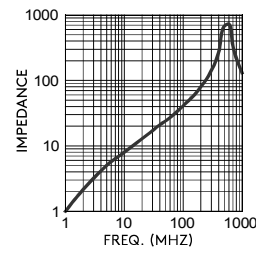
RFS2-9-5-A5



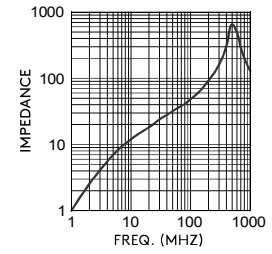
RFS2-9-8-3-A5



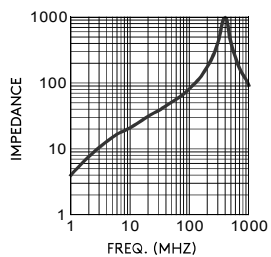
RFS2-9-4-A5



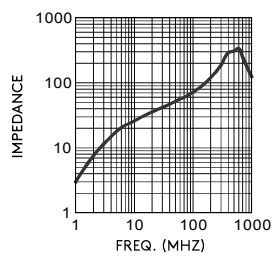
RFS2-9-6-A5



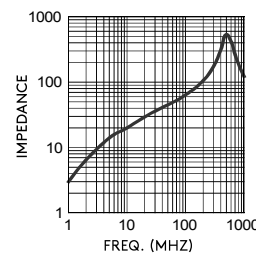
RFS2-9-8-A5



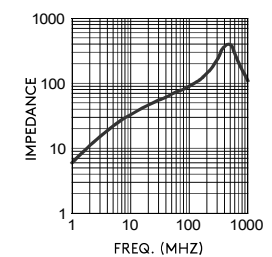
RFS2-9-12-A5



RFS2-9-12-2-A5



RFS2-9-15-A5



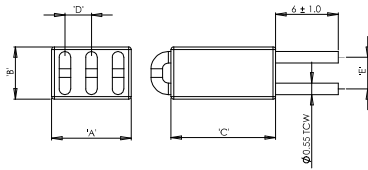
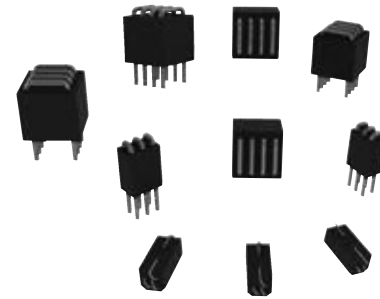
Multiline Suppressor Beads

RSH

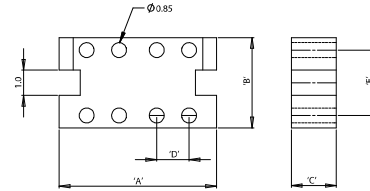
Ferrite Material: K5B A5 RMS-303

Wire: RMS-307

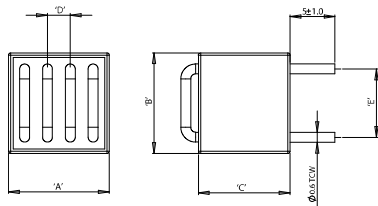
Adhesive: RMS-301



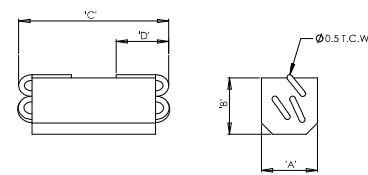
Type 1



Type 3



Type 2

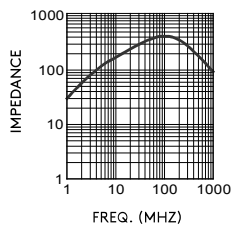


Type 4

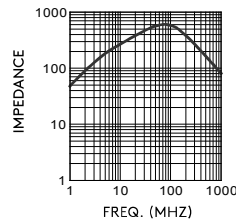
Part Number	Type	Dimensions (mm)					Impedance (Ω)		Std Pack Qty
		A	B	C	D	E	25MHz	100MHz	
RSH5-5055-46	4	5	5	8	2	-	289	416	1000
RSH5-5085-46	4	5	5	11	3.5	-	437	592	1000
RSH6-7680-50A	1	7.6	5	8	2.54	2.54	119	189	200
RSH6-76100-50A	1	7.6	5	10	2.54	2.54	171	263	200
RSH8-10226-60A	3	10.6	6	2.6	2.54	2.54	48	73	1000
RSH8-112102112A	2	11.2	11.2	10.2	2.54	7.62	236	383	280

Standard Pack sizes may vary

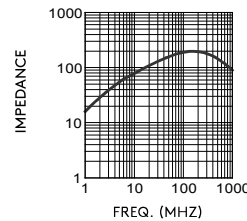
RSH5-5055-46



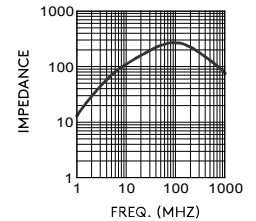
RSH5-5085-46



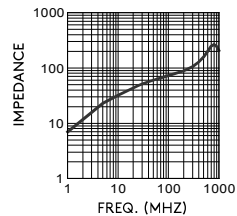
RSH6-7680-50A



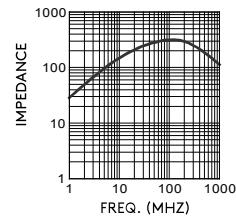
RSH6-76100-50A



RSH8-10226-60A



RSH8-112102112A



031 10 50 00



sales@essentracomponents.se

INLINE BEADS

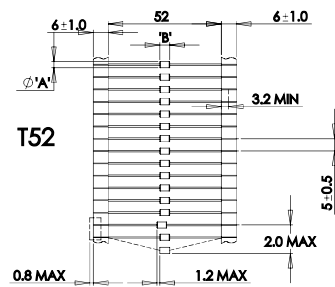
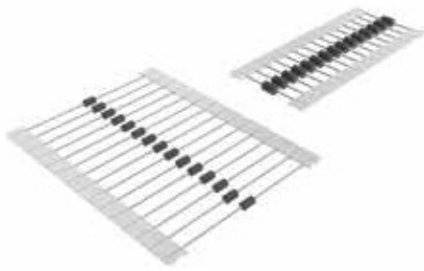
Axial Type

RRHL

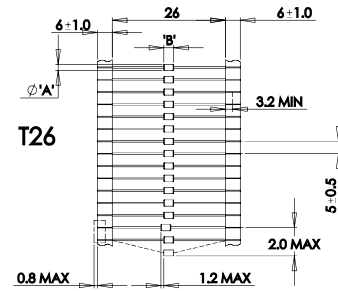
Ferrite Material: K5B RMS-303

Adhesive: RMS-301

Wire: RMS-308



Type 1

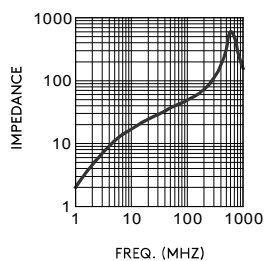


Type 2

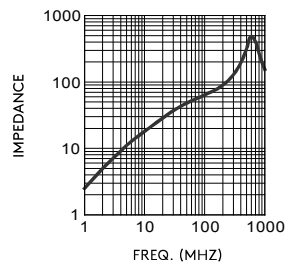
Part Number	Type	Dimensions (mm)		Impedance (Ω)		Std Pack Qty
		A	B	25MHz	100MHz	
RRHL25-30-8T52	1	2.50	3.00	27	47	5000
RRHL25-40-8T52	1	2.50	4.00	32	51	5000
RRHL25-70-8T52	1	2.50	7.00	56	89	5000
RRHL35-30-8T52	1	3.50	3.00	33	59	5000
RRHL35-32-8T52	1	3.50	3.20	31	57	5000
RRHL35-35-8T52	1	3.50	3.50	37	63	5000
RRHL35-45-8T26	2	3.50	4.50	39	76	1000
RRHL35-45-8T52	1	3.50	4.50	47	76	5000
RRHL35-47-8T26	2	3.50	4.70	46	72	2000
RRHL35-47-8T52	1	3.50	4.70	49	79	5000
RRHL35-50-8T26	2	3.50	5.00	47	72	2000
RRHL35-50-8T52	1	3.50	5.00	50	85	5000
RRHL35-60-8T26	2	3.50	6.00	55	84	2000
RRHL35-60-8T52	1	3.50	6.00	57	84	5000
RRHL35-67-8T52	1	3.50	6.00	65	99	5000
RRHL35-75-8T52	1	3.50	7.50	68	113	5000
RRHL35-80-8T26	2	3.50	8.00	70	125	1000
RRHL35-80-8T52	1	3.50	8.00	88	138	5000
RRHL35-83-8T52	1	3.50	8.30	74	131	5000
RRHL35-90-8T26	2	3.50	9.00	85	150	1000
RRHL35-90-8T52	1	3.50	9.00	92	140	5000
RRHL35-95-8T52	1	3.50	9.50	92	141	5000
RRHL35-100-8T52	1	3.50	10.00	99	157	5000
RRHL35-114-8T52	1	3.50	11.40	105	165	5000
RRHL35-140-8T52	1	3.50	14.00	144	212	5000

Standard Pack sizes may vary

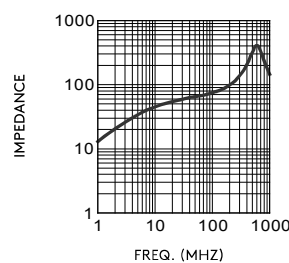
RRHL25-30-8T52



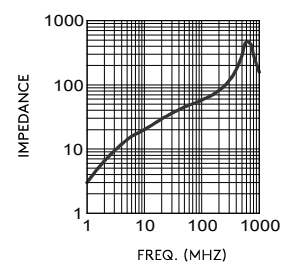
RRHL25-40-8T52



RRHL25-70-8T52



RRHL35-30-8T52



INLINE BEADS

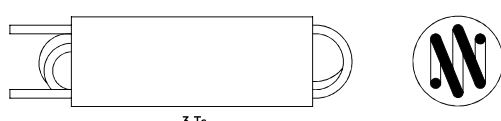
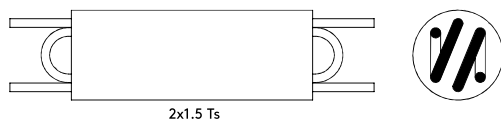
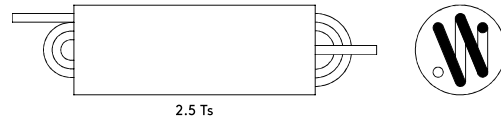
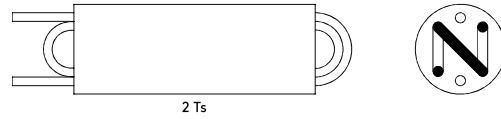
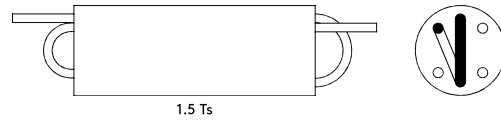
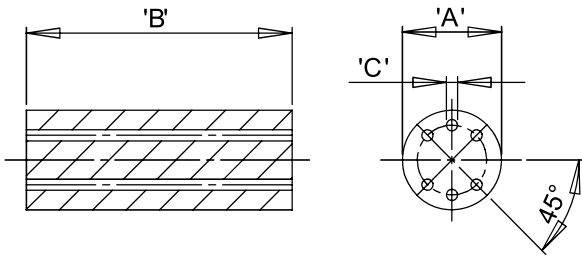
Wound Beads

RRH6

Ferrite Material: K5B - A6 RMS-303

Adhesive: RMS-301

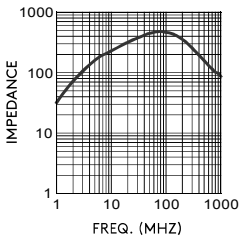
Wire: RMS-306



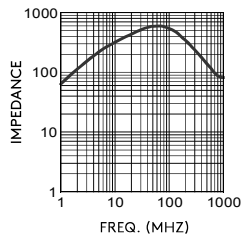
Part Number	A (mm)	B (mm)	C (mm)	Impedance (Ω)		Number of Turns	Std Pack Qty
				25MHz	100MHz		
RRH6-1-15-K5B	6	10	0.85	390	460	1.5	500
RRH6-1-20-K5B	6	10	0.85	510	580	2	500
RRH6-1-20-A6	6	10	0.85	450	486	2	500
RRH6-1-25-K5B	6	10	0.85	690	680	2.5	500
RRH6-2-15-K5B	6	10	0.85	340	450	2 x 1.5	500
RRH6-1-30-K5B	6	10	0.85	860	750	3	500

Stand Pack Sizes May Vary

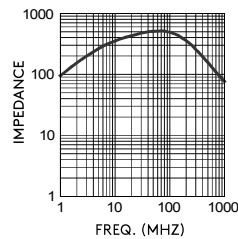
RRH6-1-15-K5B



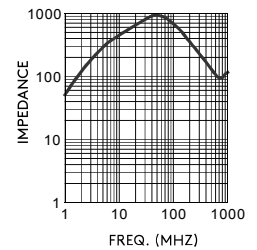
RRH6-1-20-K5B



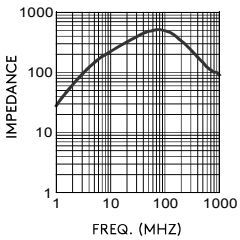
RRH6-1-20-A6



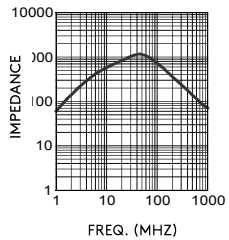
RRH6-1-25-K5B



RRH6-2-15-K5B



RRH6-1-30-K5B



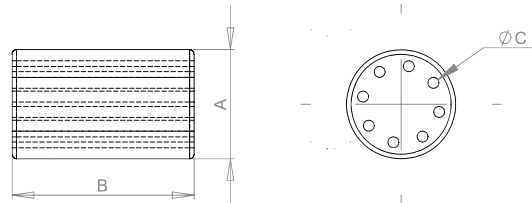
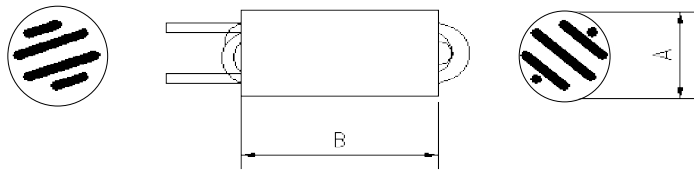
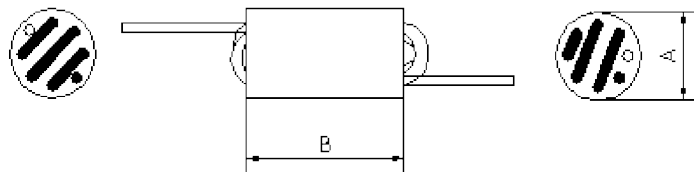
Wound Beads

RRH8

Ferrite Material: K5B RMS-303

Adhesive: RMS-301

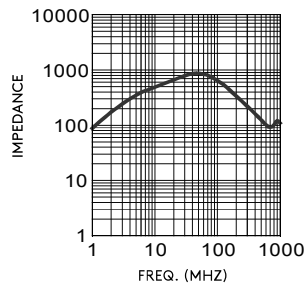
Wire: RMS-306



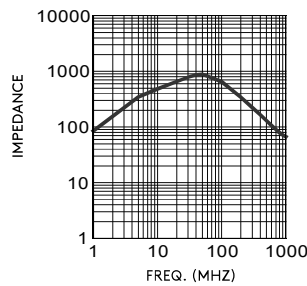
Part Number	Dimensions (mm)			Impedance (Ω)		Number of Turns	Std Pack Qty
	A	B	C	25MHz	100MHz		
RRH8-2-35-K5B	5.2	10	0.85	726	667	3.5	500
RRH8-2-40-K5B	5.2	10	0.85	754	680	4	500

Standard Pack sizes may vary

RRH8-2-35-K5B



RRH8-2-40-K5B



WHAT'S NEW?

We're always looking at bringing you new products that can raise the performance of your application or make your job easier – or both.

Take a look at our latest solutions delivered with hassle-free service.



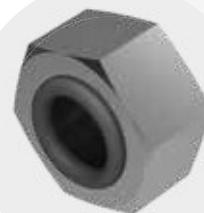
**THREADED CAPS
AND PLUGS**



**STAINLESS
BALL
BUSHINGS**



**ONE TOUCH
FASTENERS**



**INTEGRAL SEAL
HEX. NUTS**



**VENTED
WASHERS**



**LINEAR
RAILS**



**RIBBED PIPE
END PLUGS**



**SEAL
WASHERS**



**CAPTIVE
SCREWS**



**SOFT KNURLED
CAPS**



**GASKET PIPE
AND BEVEL
PROTECTION**



ROD ENDS

Over
45,000
products
available



FIND OUT MORE TODAY.

essentracomponents.se



031 10 50 00



sales@essentracomponents.se

WHY ESSENTRA?



Free Samples



Free CADs



Stock to Ship



Manufactured
in Europe



Local
expertise



Custom solutions
available

FIND OUT MORE TODAY.

Ready to talk?

Call **031 10 50 00** or email us at
sales@essentracomponents.se